

Early Bird Lawn Mower

Owner's Manual

This manual contains important safety instructions for the gasoline engine powered lawnmower models: JADE-48ZTR

**READ SAFETY WARNINGS AND OPERATING INSTRUCTIONS CAREFULLY.
SAVE THIS MANUAL.**



Need Help?

Parts, Service

When you call the help-line you will need to have the following information:

Date of Purchase: _____
Location of Purchase: _____
Serial # - Mower: _____
Serial # - Engine: _____
Serial # - Hydro Trans (L) _____
Serial # - Hydro Trans (R) _____

Mower and engine life are extended greatly by performing frequent lubrications, oil changes and regular maintenance. To protect your investment perform routine maintenance.



Copyright© 2023 by Liaocheng Jade Outdoor Power Equipment.,Ltd. All rights reserved.
No part of this publication can be reproduced or distributed without prior written permission of Liaocheng Jade Outdoor Power Equipment.,Ltd

Early Bird is a registered trademark of Liaocheng Jade Outdoor Power Equipment.,Ltd

Liaocheng Jade Outdoor Power Equipment.,Ltd reserves the right to discontinue or change specifications or design at any time without notice and without incurring any obligation whatsoever.

The information and specifications included in this publication were in effect at the time of approval for printing.



This manual contains important safety instructions for Finish Mowers
READ SAFETY WARNINGS AND OPERATING INSTRUCTIONS CAREFULLY
SAVE THESE INSTRUCTIONS.

This owner's manual is considered a permanent part of the finish mower and should remain with the finish mower if resold.

Contents

Safety Information and Warnings	1
Preparation Safety Precautions	2
Operation Safety Precautions	3,4
Slope Diagram	5
Safety Decals	6
Product Specifications	7
Control Panel and Lawn Mower Components	8
Operating Instructions	
Starting the Engine	9
Operating the Mower	10
Changing the Height of Cut.....	11
Spare Parts	12-28
General Maintenance.....	29
Maintenance Schedule.....	30
Storage Instructions	31
Troubleshooting	32, 33
Missing Parts Request Form.....	34
Limited Warranty and Service.....	35

About the JADE-ZTR48 Mower Manual

Congratulations on the purchase of your new JADE-ZTR48 Mower . We at Jade Outdoor Power Equipment are confident that this mower will provide excellent performance, outstanding quality, and great durability when operated and maintained as directed in this manual.

1. This manual contains assembly, operating, safety, adjustment, maintenance, and troubleshooting instructions. BEFORE OPERATING YOUR LAWN MOWER, CAREFULLY READ THIS MANUAL IN ITS ENTIRITY.
2. This owner's manual is considered a permanent part of the mower. It must be available to all operators and/or person(s) servicing the mower. Should the mower be resold, this manual must remain with the mower.
3. All information, illustrations, and specifications contained in this manual were in effect at the time of the publication. Jade Outdoor Power Equipment reserves the right to add, delete or modify specifications and/or designs without notice.
4. If you ever have questions in regards to the operation, maintenance or safety of your mower, please contact the JADE Parts & Service, LLC at 400-188-6691.

**Safety Information**

JADE-ZTR48 lawn mowers are designed to give safe and dependable service if operated according to instructions. Read and understand this owner's manual before operating your lawn mower.

Emission Control System InformationThe U.S. and California Clean Air Acts

EPA and California regulations require all manufacturers to furnish written instructions describing the operation and maintenance of emission control systems. The following instructions and procedures must be followed in order to keep the emissions from your engine within the emission standards.

Safety Label Locations

Safety labels are located on your mower to warn you of potential hazards. Read them carefully. If a label comes off or becomes hard to read, contact your JADE Parts and Service, LLC for a replacement.

Operator Responsibility

It is the owner's responsibility that all operators and mechanics must be trained and read this manual before operating the mower as well as being physically able individuals. They should be instructed about safe operating and mechanical procedures. If they can not read or understand English, it is the owner's responsibility to explain all safety operating instructions. The owner or operator is responsible for accidents or injuries occurring to themselves, other people or property. Potential misfortunate incidents can be prevented by the owner/user.

Mower Inspection

For your safety, inspect the lawn mower before each use. Before you begin your inspection, be sure the following conditions are met: the lawn mower should be on a level surface, with the ignition switch off, the key removed, the break set, and the blades disengaged. Also, disconnect the spark plug wires from the spark plugs and ground them against the engine to prevent inadvertent starting.

1. Walk around the mower and look for any fluid spills or leaks on or underneath the mower. Remove any and all excessive debris, dirt, and fluids.

2. Look for signs of damage or excessive wear. Check the tightness of all nuts, bolts, pins, and screws. Tighten any that may be loose and replace any that are missing.
3. Be sure the safety interlock controls are operating properly so that the engine cannot be started unless the ground speed control lever is in neutral and the blades are disengaged.
4. Check the mower blades for any damage or abnormal wear. If replacement is required, replace in sets so that they are balanced.
5. Check the tire pressure on all four tires. Do not exceed the recommended maximum indicated on the tire.
6. Check the belts for wear and correct tension.
7. Check engine oil and air filters as recommended in the engine manufacturer's manual.

Children

1. Never allow children to operate or ride on mowers.
2. Always keep children at a safe distance when operating or servicing a mower
3. Make sure to always look out for children before you make turns or reverse.
4. Never let children or untrained people operate or service the equipment. Local regulations may



WARNING! Do not use your Early Bird lawn mower to carry passengers. Keep bystanders, helpers, pets and children at a safe distance from the machine while it is in operation. Inspect the area where the equipment is to be used and remove all objects such as rocks, toys, and wires which can be thrown by the machine causing serious injury or death.



Wear appropriate clothing including hard hat, safety glasses and hearing protection. Long hair, loose clothing or jewelry may get tangled in moving parts.

**Preparation—Safety Precautions**

1. Evaluate the terrain to determine what accessories and attachments are needed to properly and safely perform the job. Only use accessories and attachments approved by JADE.
2. Inspect the area where the equipment is to be used and remove all objects such as rocks, toys, and wire which can be thrown by the machine causing serious injury or death.
3. People, pets, and most importantly children must not be near the area being mowed. Do not operate the mower in their presence.
4. Never operate mower with damaged guards, shields or covers.
5. All users of the mower must be alert and pay attention to safety alerts, symbols, and safety signs.
6. Be sure to inspect mower before each use.
7. Always use roll bar when possible and never remove or modify the roll bar in any way or form.
8. Check the controls and shields to make sure that they are functioning properly before operating. Do not operate if any are damaged or missing.
9. Never operate with discharge deflector raised, removed or altered, unless a grass catcher is being used.
10. Install, and maintain in working order, a spark arrester before using equipment on forest-covered, grass-covered, or brush-covered unimproved land.

Gasoline and other fuels—Safety Precautions

Use extra care when handling gasoline and other fuels as they are flammable and vapors can explode.

1. Only use gasoline approved containers for storage and keep out of reach from children.
2. Do not fill fuel tank completely full. Overfilling may result in fuel leakage. Leave a reasonable amount of space for fuel to expand.
3. If fuel is spilled, do not start the engine. Move the mower away from the area, wipe up the spill thoroughly and wait until fuel vapors have evaporated before starting engine.
4. Do not fill gasoline containers inside a vehicle or on a truck/trailer bed.
5. Never remove gas cap or add fuel when engine is running.
6. Avoid prolonged breathing of gasoline vapors.
7. Never refuel or drain the machine indoors.
8. Keep face away from nozzle and gas tank opening.
9. Keep gas and other fuels away from skin and eyes.
10. Never use the mouth to siphon gas.
11. Never refuel the mower until all moving parts on the mower have stopped.

12. Never smoke when handling fuels and stay away from an open flame where fumes can be ignited by a spark.
13. Always place gasoline containers on the ground away from your vehicles prior to filling.
14. Gasoline is harmful or fatal if swallowed.



DANGER: GASOLINE IS HIGHLY FLAMMABLE AND EXPLOSIVE. Do not add fuel while the engine is running or is hot. Keep open flames, sparks, and heat away from the fuel and store fuel in containers specifically designed for that purpose. **ADD FUEL OUTDOORS ONLY. IF THE FUEL IS SPILLED, DO NOT START THE ENGINE.** Manually push the mower away from the spill and wipe up immediately.

**Equipment Operation—Safety Precautions**

1. Do not operate the engine in a confined space where dangerous carbon monoxide fumes can collect. Carbon monoxide is odorless, tasteless, and can be fatal.
2. Mow only in daylight or under good lighting conditions.
3. Make sure the mower is in neutral, parking brake is engaged, blades are disengaged, seat belt on, roll bar is raised and the operator is sitting in the proper position before attempting to start the engine.
4. Never operate on wet grass.
5. Watch for pedestrian or vehicular traffic when moving the mower while not in use (i.e., loading, unloading or transporting).
6. Never operate the mower with defective guards or shields, or without the safety devices securely mounted in place and functioning properly.
7. Be aware of discharge and never direct discharge of material toward bystanders nor allow anyone, especially children, near the mower during operation.
8. Do not change the governor settings or over speed the engine.
9. Always stop the engine when you leave the mower, even for a moment.
10. To help reduce fire hazard, keep the engine and the area around the engine free of grass, leaves or any other type of foreign material.
11. Beware of cutting edges. For safety always wear gloves when performing blade maintenance activities. Beware on multiple blade units since the rotation of one blade may cause the rotation of the other blade.
12. Do not operate the mower with the grass chute deflector in the raised position. Serious injury could occur.
13. If lightning is seen or thunder is heard in the operators vicinity, do not operate machine. Instead find shelter, as lightning may cause injury/death.
14. Never raise the mower deck while the blades are running.
15. Stop on a level ground, disengage drive, engage parking brake, and shut off engine before leaving operator's position for any reason including clearing grass catcher or unclogging the chute.
16. Stop the mower immediately and inspect blades after striking objects or if an abnormal vibration occurs and discontinue use until repaired.
17. Keep hands and feet away from cutting unit. This product is capable of amputating hands and feet and throwing objects.
18. Be alert and slow down when making turns. Also look left, right, and behind before changing directions and reversing to be sure there is a clear path.
19. Disengage blades, slow down, and drive cautiously when crossing roads and side walks.
20. Never operate mower under the influence of alcohol and drugs.
21. Use care when loading or unloading the machine into a trailer or truck.
22. Use care when approaching blind corners, shrubs, trees, or other objects that may obstruct vision.
23. Always disengage blades when not in use.
24. Never listen to music with headphones/earphones while operating the mower.

**Slope Operation—Safety Precautions**

1. Do not mow on slopes greater than 15 degrees.
2. Be extremely careful when operating the mower on a slope. Reduced traction could cause sliding.
3. Do not stop or start suddenly when going uphill.
4. Slow down and use caution when making turns and when changing direction on slopes.
5. Do not operate a riding mower near steep slopes, ditches, or water. Use a walk behind mower or a hand trimmer for these areas.
6. Roll bar should be raised and locked with seat belt buckled even before engine is turned on.
7. Should it be necessary to lower the roll bar, seat belt should not be used.
8. If tires lose traction, disengage the blades and drive slowly and cautiously off the slope.
9. Use extreme care with attachments as they can change the stability of the mower and cause loss of control.
10. Slow down and drive extra carefully on hillsides. Be sure to drive in the recommended direction on hillsides. Turf conditions can affect the machine's stability.
11. The parking brake may not hold the mower if parked on a slope.

IMPORTANT! The mower belts are adjusted to ensure the blades stop turning within seven (7) seconds of releasing the blade control lever. If you are making any belt adjustments whatsoever, for your safety and the safety of others around you, you must ensure the belts are re-adjusted to achieve this design specification.

GASOLINE IS HIGHLY FLAMMABLE AND EXPLOSIVE. FUEL LEAKS, A LOOSE FUEL TANK, OR A LOOSE FUEL VALVE CAN LEAD TO SEVERE INJURY OR DEATH. DO NOT OPERATE THIS MOWER IF ANY COMPONENT OF THE FUEL SYSTEM IS LOOSE OR LEAKS GASOLINE!

DANGER: Do not bypass, modify, alter or disconnect the safety system. Make sure that the safety interlock system is fully operational each time before mowing.

Before attempting to use your mower, make sure you are familiar with all of the components and have read the manual.

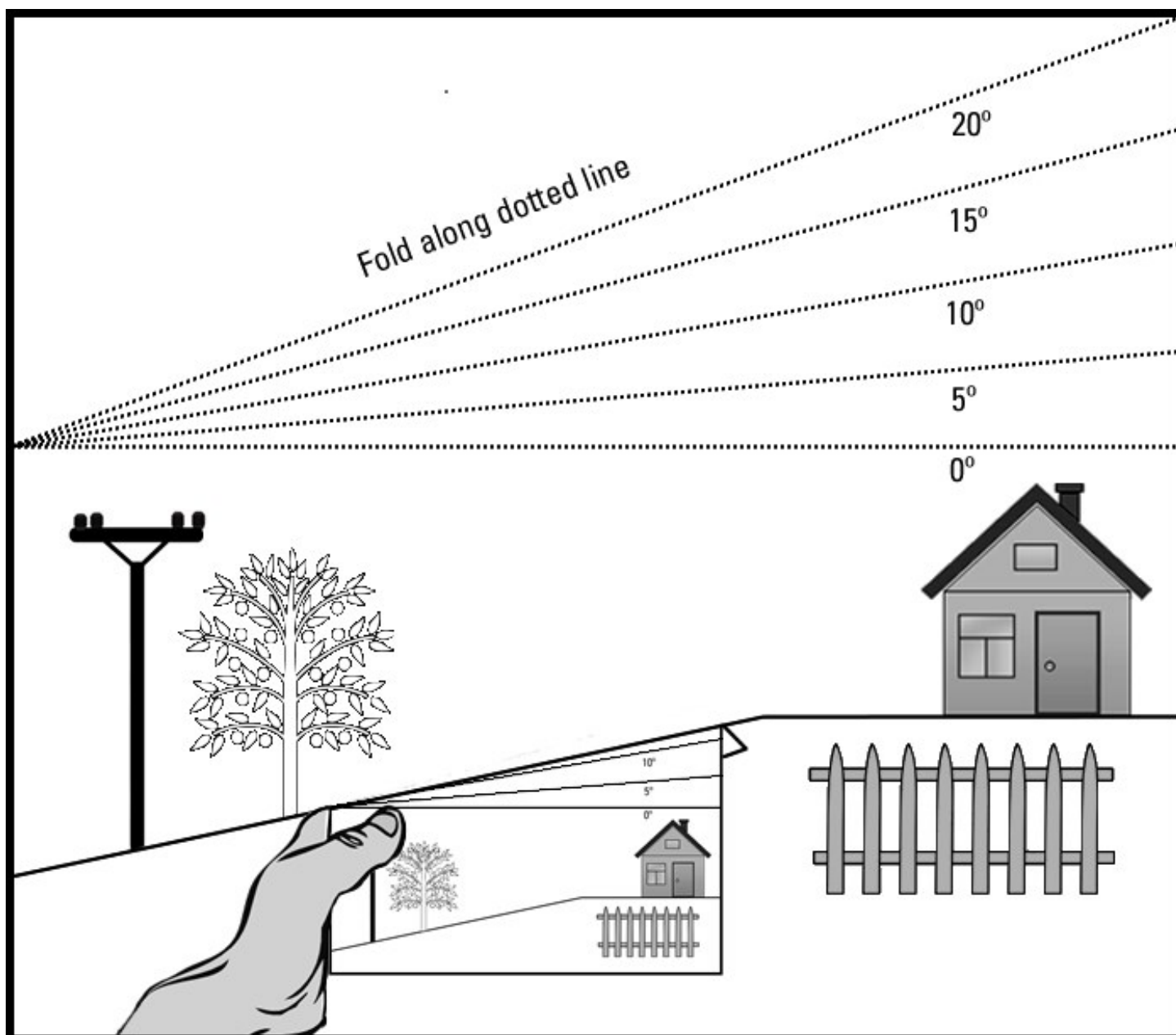
Before setting up your Early Bird mower, disconnect the spark plug wires from the spark plugs and ground them against the engine to prevent inadvertent starting. This step should be taken as a precaution whenever you are working on this machine.

Need Help?

Parts, Service
and Technical Assistance call:

400-188-6691

www.jadeequipments.com



The maximum slope angle you can safely operate your mower on is **15 degrees**. Do not exceed 15 degrees with your mower.

1. Line up the side of this page with a vertical object to gauge the angle of the slope.
2. Fold this sheet along the dotted line and verify the slope is not in excess of 15 degrees.



Safety Decal Identification

The labels shown below are located on your mower to warn you of potential hazards and provide you with important safety information. If these decals become difficult to read or are missing from the mower, please contact JADE Parts & Service, LLC at 400-188-6691 or www.jadeequipments.com for a replacement.



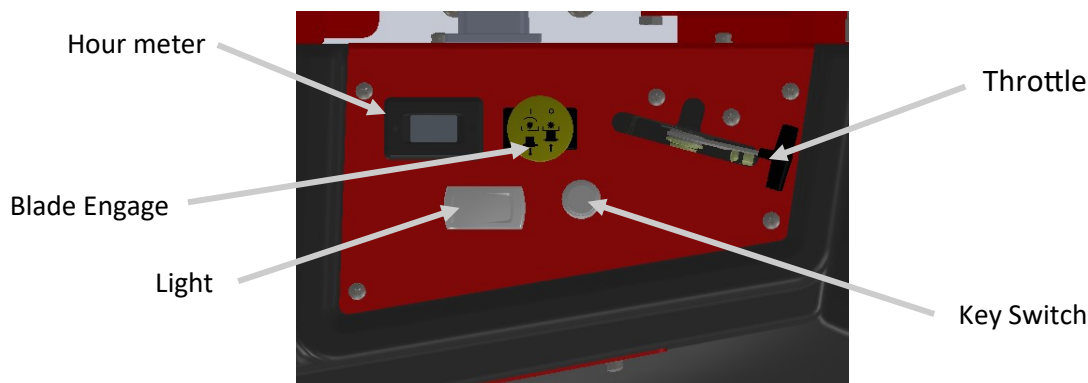
	Models
Feature	JADE-ZTR48
Product Type	Commercial, Zero-turn
Cutting Width	48-inch
Engine	See engine manufacturer's manual
Engine Start	Electric
Transmission Type	Dual hydrostatic
Transmission Mfg	Hydro-Gear
Mower Speeds	Infinitely variable
Deck Type	Floating, quick change
Cutting Height	1.0– 5.0 inches(½-inch increments)
Blade Engagement	Electromagnetic Clutch
Blade Tip Speed	18,750 ft/min
Anti-Scalping Rollers	3 front/2 rear
No. Blades/ Length	3, 16.5-inch blades
Control System	Dual Control Lever
Fuel/Capacity	Gasoline/40L
Rear Drive Tires	23-inch X 10.5-12inch turf tread
Front Caster Tires	13*6.5-6-inch smooth tread
Brake System	Internal hydraulic and mechanical park
Weight	Approx. 460kg
Length/Width/Height	1840mm*1625mm*1782mm
LED Head Light	Standard
Cutter Belt Type	Premium B-section
Forward speed	0-10mph (16kph)
Reverse Speed	0-5mph (8kph)
Engine Speed	3600rpm
Engine Power	23hp



Throughout this manual, instructions are given on the operation of your Early Bird mower. We recommend that while going through this manual, you have your mower available for quick and easy access in order to orient yourself with the controls, maintenance and orientation of different parts. Please read through the manual before operating.

Control Panel

Below, you will find a diagram of the control panel. Please take the time to familiarize yourself with the mower



Lawn Mower Component Identification

(Some components may appear different than shown, depending on the model.)



Starting the Engine

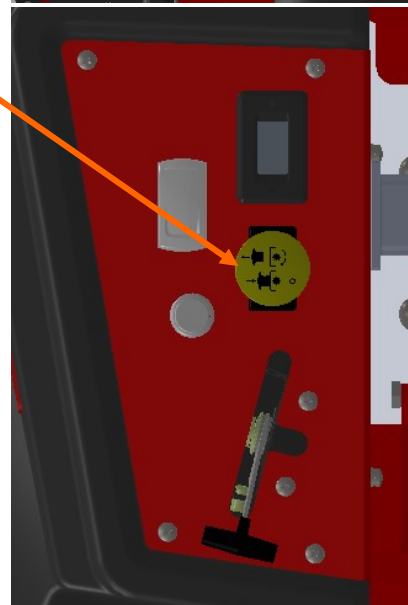
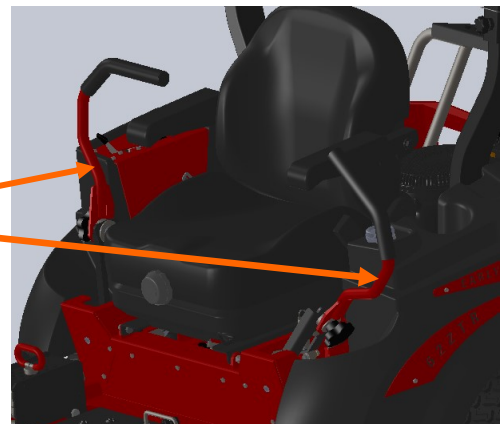
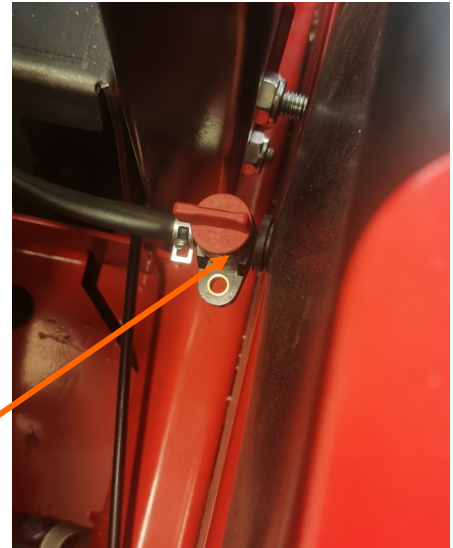


Before attempting to use your mower, make sure you are familiar with all of the components and have read the manual.

DANGER: Exhaust contains poisonous carbon monoxide, a colorless and odorless gas. Breathing exhaust can cause loss of consciousness and may lead to death. Do not operate the engine in a confined space where dangerous carbon monoxide fumes can collect.

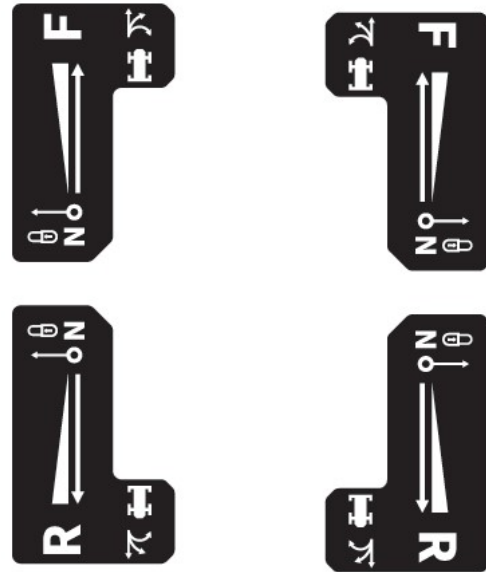
NOTE: Be sure to add fresh unleaded gasoline and fill the engine to the proper level with manufacturers recommended motor oil before starting your mower.

1. Make sure the shut off valve, located at the bottom of the tank, is in the ON position.
2. Make sure the brake is set and the 2 control handles are spread open into their neutral position.
3. Make sure the blade engage switch lever is in the OFF position.
4. Pull CHOKE and set the throttle to its mid-point.
5. Turn the key clockwise to the START position and allow it to return to the ON position when the engine starts.
6. When the engine starts to run and the key returns to the ON position, push CHOKE off.



**Operating the Mower**

1. Make sure the brake has been moved to the OFF Position.
2. Pull both control handles to the center, at the same time the parking brake was released .
3. To drive the mower forward, push both handle bars forward away from the chest. The forward speed is directly proportional to the degree these handles are moved forward.
4. To turn the mower left, push to the right handle in front of the left handle or the left handle more towards the neutral position than the right handle.
5. To turn the mower right, perform the handle movements described in step 4 above with except with the opposite handle position.
6. To stop the forward motion of the mower, move both the handles to the center/neutral position.
7. To drive the mower backwards, pull both handle bars backwards toward the chest.
8. To turn backwards to the right or left, repeat the steps in 4 or 5 above except in the opposite direction.
9. To zero degree turn to the right, push the left handle forwards and the right handle backwards.
10. To zero degree turn to the left, push the right handle forwards and the left handle backwards.
11. When in the neutral position, the hydraulic system prevents the mower from moving easily. However, on a grade, the mower can move very slowly (with the engine off or running). Be sure to set the manual parking brake any time the mower is left unattended or is being transported.
12. When the handles are in the middle position they can be pushed away from each other to lock the mower in the neutral .



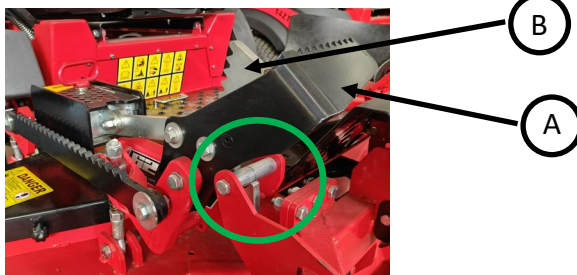
Changing the Height of Cut

Your mower is equipped with an easily adjustable floating deck, which can be adjusted for cut heights of 1.0 inches to 5.0 inches in ½-inch increments. The deck height adjuster is located on the right side of the mower.

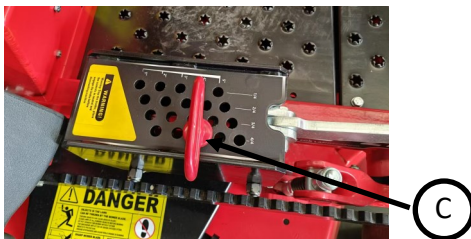
How to Change the Cut Height

WARNING When adjusting the cutting height, ensure that there are no pebbles or other items under or around the blade to prevent projectiles from injuring other; do not place your feet under the blade.

1. The pedal a is pushed forward until the lock tongue B in Fig. 1 completes the locking action, which is the initial height.



2. As shown in Figure 2 (the dial has a total of 5 large positions, each of which can also be fine-tuned), select appropriate grass cutting height and insert the height adjustment pin C into the corresponding hole.



3. Step on the lock tongue b, the lock tongue disengages from the positioning , and the knife disc will drop to the corresponding selected height. Repeatedly operate 1, 2, and 3 to select different cutting heights



Mowing



WARNING! Thoroughly inspect the area where you plan to use the mower. Look for items such as stones, sticks, wire, and other foreign objects. If struck by the mower, these and other objects may become projectiles that could lead to serious injury or death. Clear area of all debris.

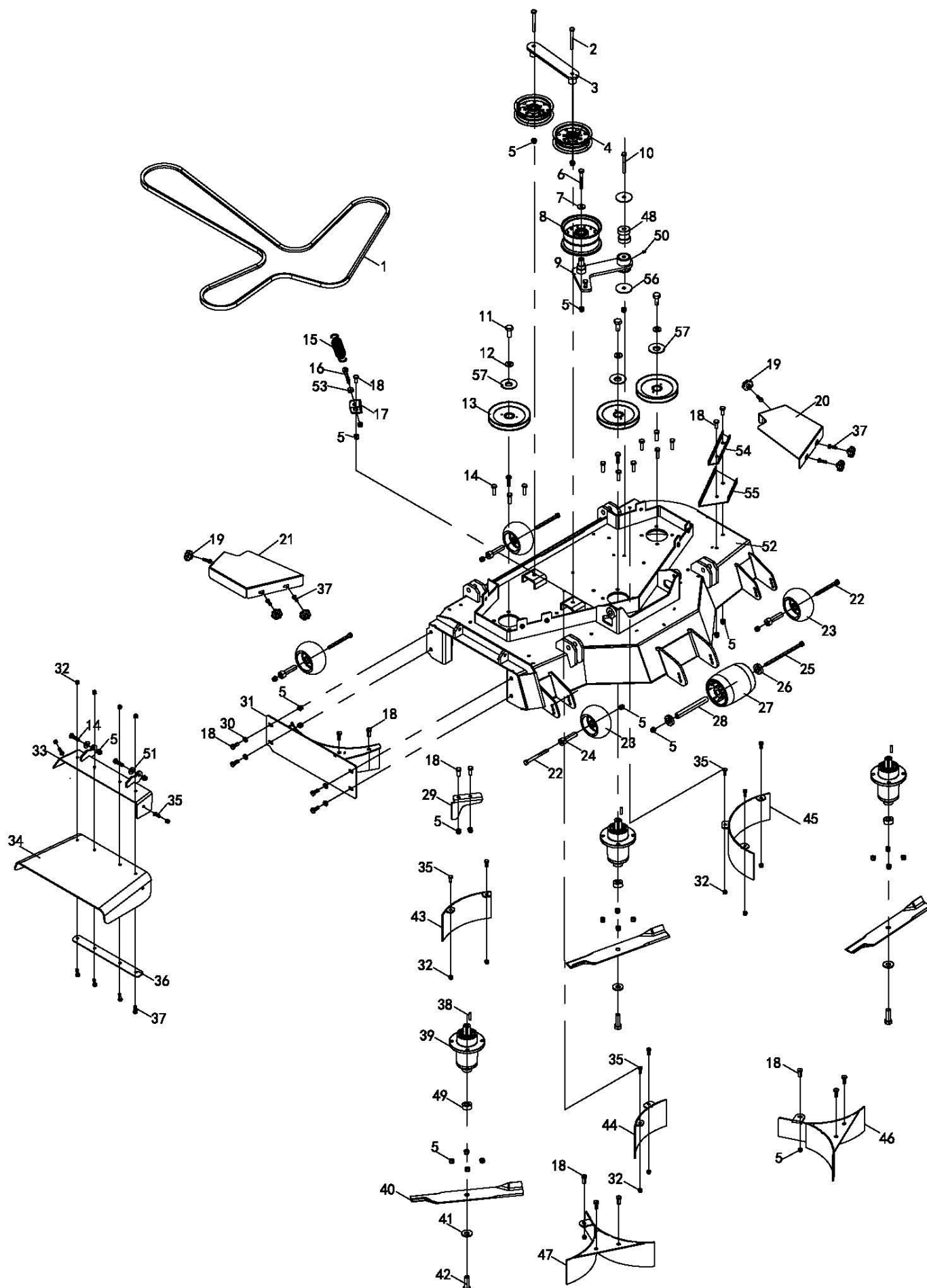
Keep people and pets at a safe distance.



WARNING! Do not operate the mower with defective guards, shields, or without the safety devices securely in place.

1. When the mower is in position on the area to be mowed, move the throttle to its full speed.
2. **SLOWLY** push the blade control lever forward to the ON position.
3. Begin mowing as described on the previous page, always using safe/ comfortable speeds.
4. To stop the blades, push the blade engage switch back to the OFF position.

IMPORTANT! The mower belts are adjusted to ensure the blades stop turning within seven (7) seconds of releasing the blade control lever. If you are making any belt adjustments whatsoever, for your safety and the safety of others around you, you must ensure the belts are re-adjusted to achieve this design specification.

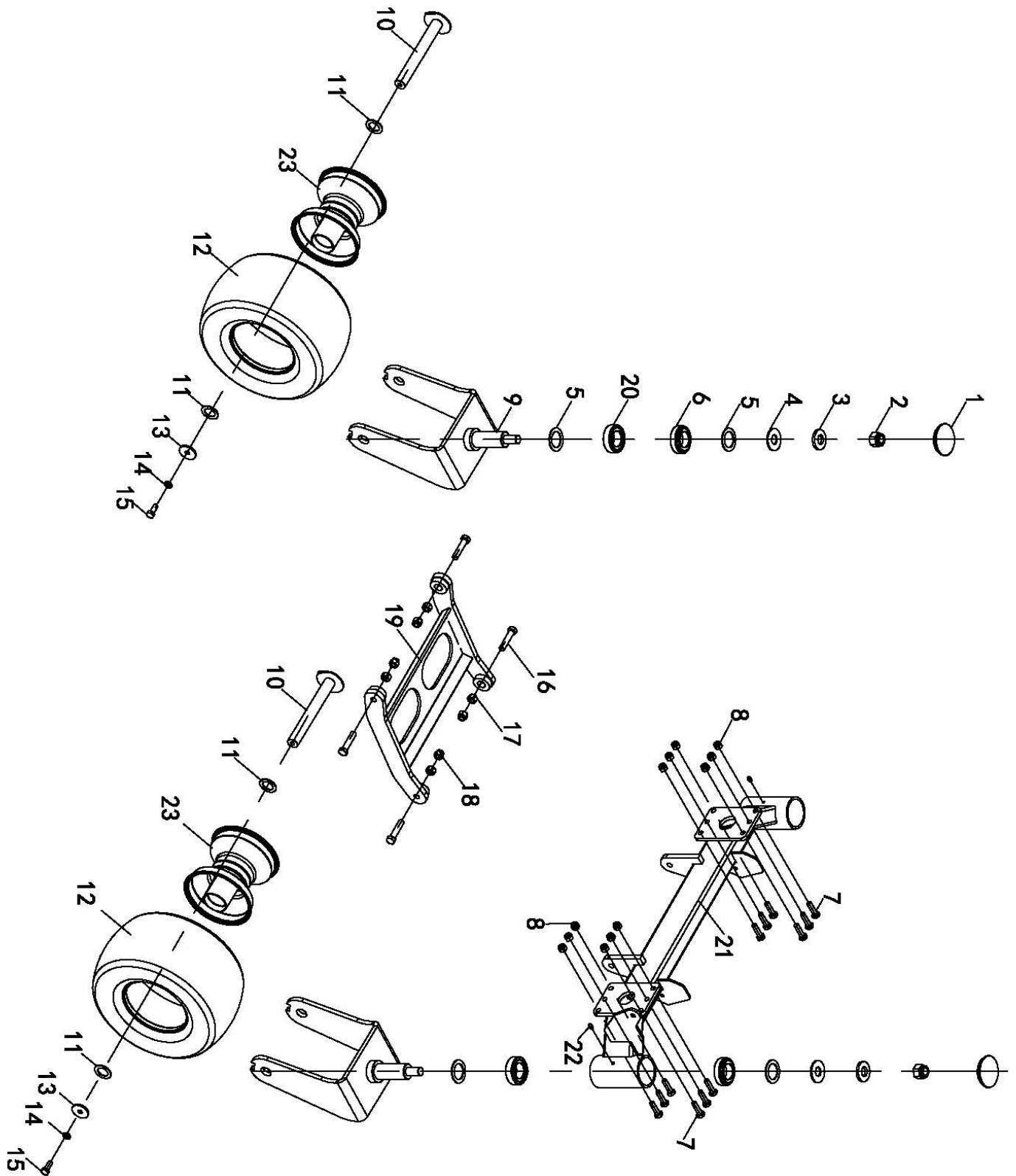




ITEM	PART NUMBER	DESCRIPTION	QTY
1	48ZTRC25-018	Deck Belt B-3581LI	1
2	GB01-448	Hexagon Head Bolt M10×85	2
3	48ZTRC25-011	Connecting Plate Weldment	1
4	35ZTR22-054	Double Bearing Belt Tensioner Pulley Assembly	2
5	GB02-035	Nylon Lock Nut M10	31
6	GB01-370	Hexagon Head Bolt M10×75	1
7	GB03-134	Tensioner Pulley Washer	1
8	36ZTS23-043	Wide Groove Belt Presser Pulley Assembly	1
9	48ZTRC25-012	Swing Arm Weldment	1
10	GB01-211	Hexagon Head Bolt M10×80	1
11	GB01-588	Fractional Bolt 1/2"-20*38	3
12	GB03-092	Tapered Spring Washer 12	3
13	48ZTRC25-009	Deck Pulley (φ158mm)	3
14	GB01-184	Hexagon Head Bolt M10×35	14
15	62ZTR24-207	Deck Belt Tension Spring	1
16	GB01-637	Eye Bolt M10×80	1
17	54ZTR25-065	Tension Rod Mounting Bracket	1
18	GB01-167	Hexagon Head Bolt M10×25	17
19	62ZTR24-199	Flange Nut M8	6
20	48ZTRC25-022	Left Guard	1
21	48ZTRC25-021	Right Guard	1
22	GB01-428	Hexagon Head Bolt M10×110	4
23	34GFM21-018	5-inch Nylon Wheel	4
24	50ZTR23-015	Leather Wheel Inner Sleeve	4
25	GB01-610	Hexagon Head Bolt M10×190	1
26	62ZTR24-151	Front Wheel Spacer Sleeve	2
27	62ZTR24-016	Nylon Wheel	1
28	62ZTR24-015	Front Leather Wheel Bushing	1
29	48ZTRC25-005	Grass Deflector Plate	1
30	GB03-043	Washer 10	4
31	48ZTRC25-002	Side Plate Grass Deflector	1
32	GB02-024	Nylon Lock Nut M8	13
33	48ZTRC25-006	Grass Discharge Port Mask Weldment	1
34	48ZTRC25-007	Grass Discharge Hood	1
35	GB01-101	Hexagon Head Bolt M8×20	9
36	48ZTRC25-008	Grass Discharge Hood Pressure Plate	1
37	GB01-114	Hexagon Head Bolt M8×25	10
38	GB09-067	Flat Key Type C 6.35x6.35x30	3
39	62ZTR24-012	Spindle Kit	3
40	48ZTRC25-010	Blade φ424.4	3
41	GB03-078	Tapered Spring Washer 16	3
42	GB01-589	Fractional Bolt 5/8"-18*50	3
43	48ZTRC25-015	Right Rear Grass Discharge Baffle	1
44	48ZTRC25-014	Middle Rear Grass Deflector Plate	1
45	48ZTRC25-016	Left Rear Grass Discharge Baffle	1

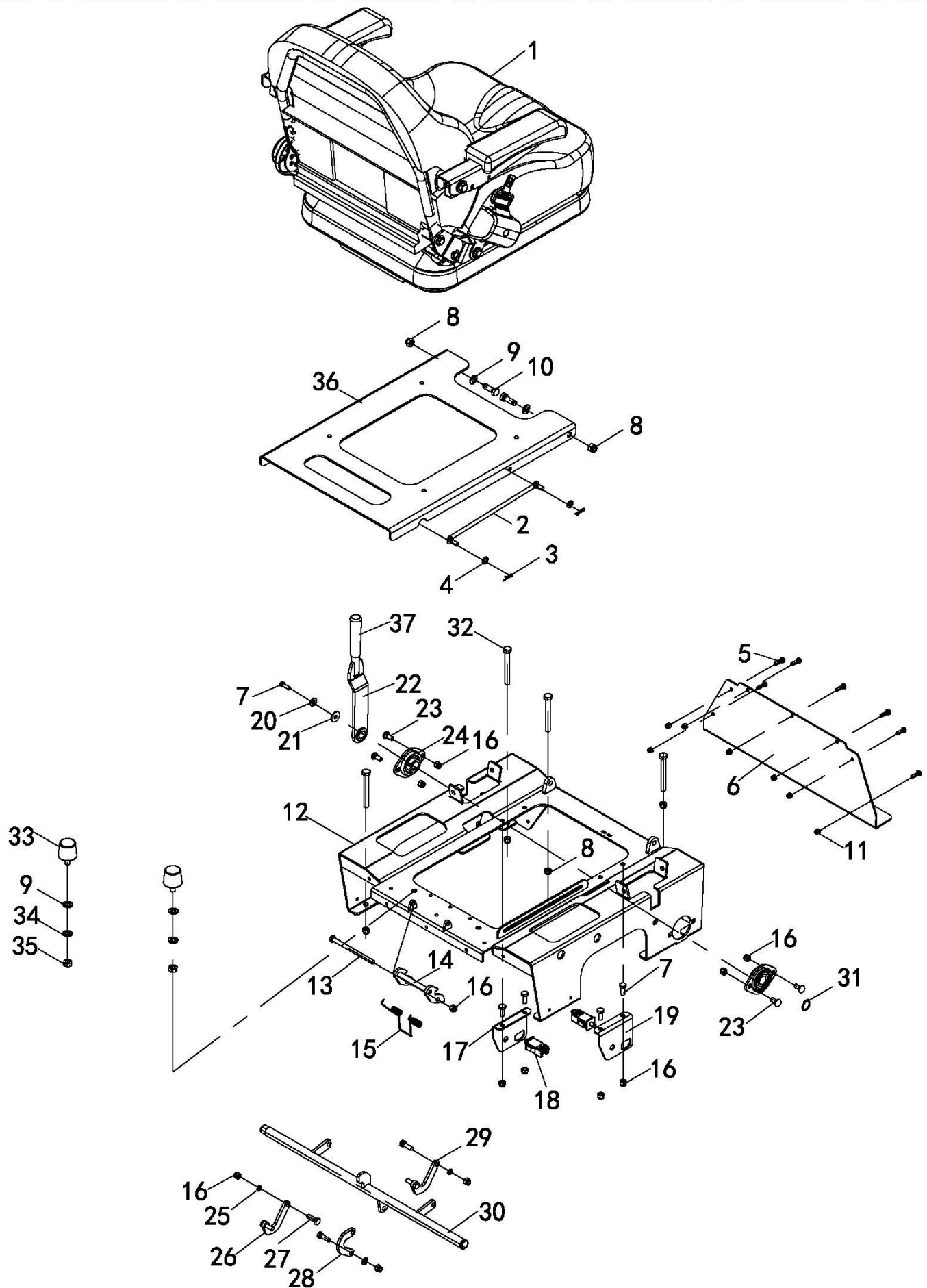


ITEM	PART NUMBER	DESCRIPTION	QTY
46	48ZTRC25-004	Left Front Grass Deflector Plate	1
47	48ZTRC25-003	Right Front Grass Deflector Plate	1
48	48ZTRC25-013	Swing Arm Rotating Shaft	1
49	GB03-170	Blade Adjustment Spacer Sleeve	3
50	GB09-080	Oil Cup M6	1
51	50ZTR23-009	Friction Washer	2
52	48ZTRC25-001	48ZTR Deck	1
53	GB02-036	Hexagon Nut M10	1
54	48ZTRC25-019	Inner Footrest Anti-Skid	1
55	48ZTRC25-017	Outer Footrest Anti-Skid	1
56	48ZTRC25-108	Tensioner Pulley Washer 50.5*10.2*3	2
57	GB03-049	Washer 37*13*3	3



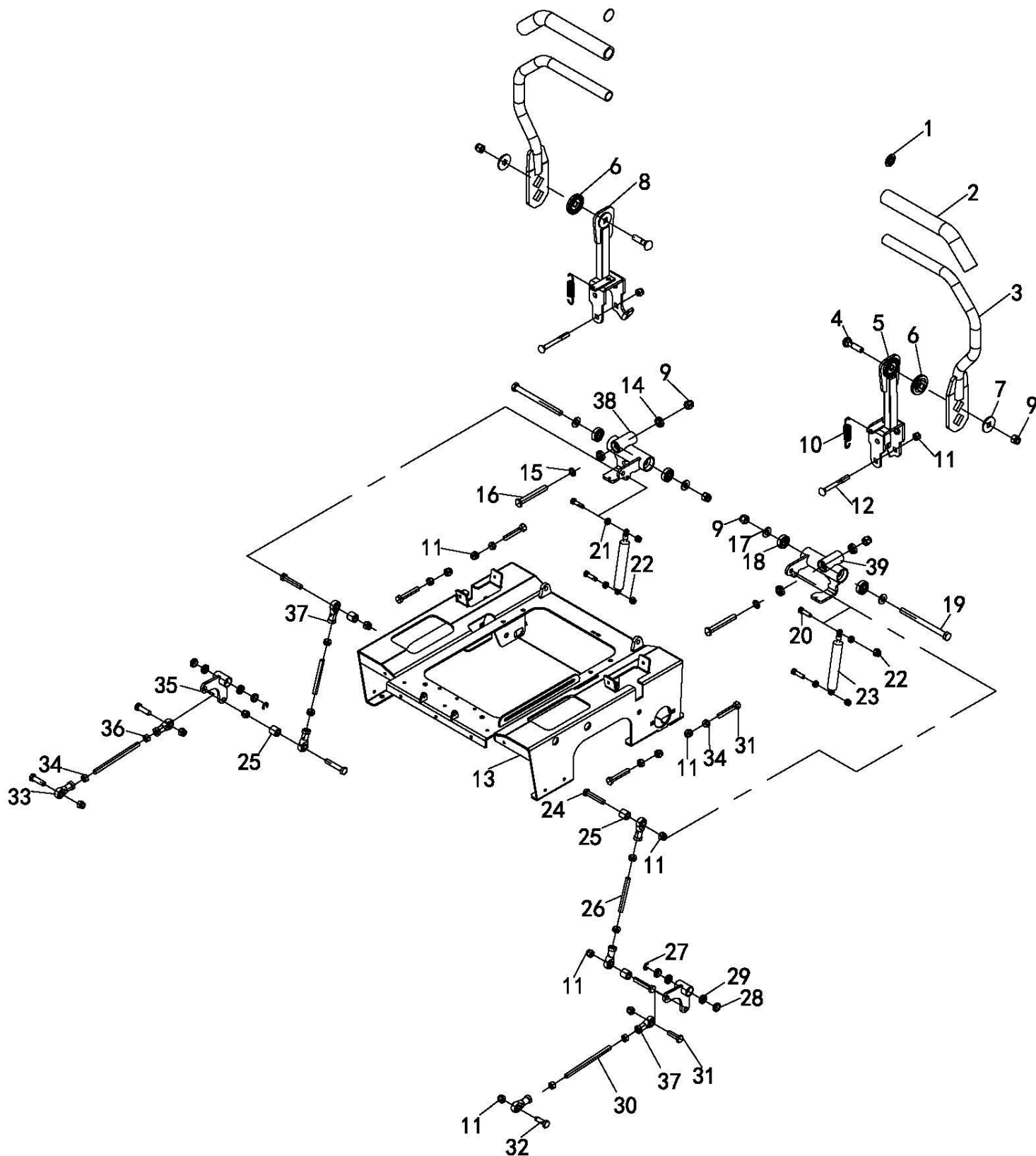


ITEM	PART NUMBER	DESCRIPTION	QTY
1	62ZTR24-033	Front Wheel Axle Cover	2
2	GB02-062	Nylon Lock Nut M20	2
3	GB03-079	Tapered Spring Washer 20	2
4	48ZTRC25-034	Front Wheel Top Spacer	2
5	48ZTRC25-035	Front Wheel Spacer	4
6	GB04-116	Tapered Roller Bearing 32007	2
7	GB01-184	Hexagon Head Bolt M10×35	12
8	GB02-035	Nylon Lock Nut M10	12
9	48ZTRC25-036	Front Wheel U-shaped Weldment	2
10	62ZTR24-029	Front Wheel Axle Weldment	2
11	62ZTR24-031	Axle Washer	4
12	62ZTR24-196	Non-pneumatic Front Tire 13×6.5-6 NHS	2
13	62ZTR24-030	Axle Spacer	2
14	GB03-025	Heavy Duty Spring Washer 10	2
15	GB01-167	Hexagon Head Bolt M10×25	2
16	GB01-612	Hexagon Head Bolt M12×55	4
17	GB02-043	Hexagon Nut M12	4
18	GB02-060	Nylon Lock Nut M12	4
19	48ZTRC25-058	Cutter Head Front Connecting Plate Weldment	1
20	GB04-117	Tapered Roller Bearing 33007	2
21	48ZTRC25-033	Front Frame Weldment	1
22	GB09-080	Oil Cup M6	2
23	62ZTR24-195	Front Wheel Rim Assembly	2



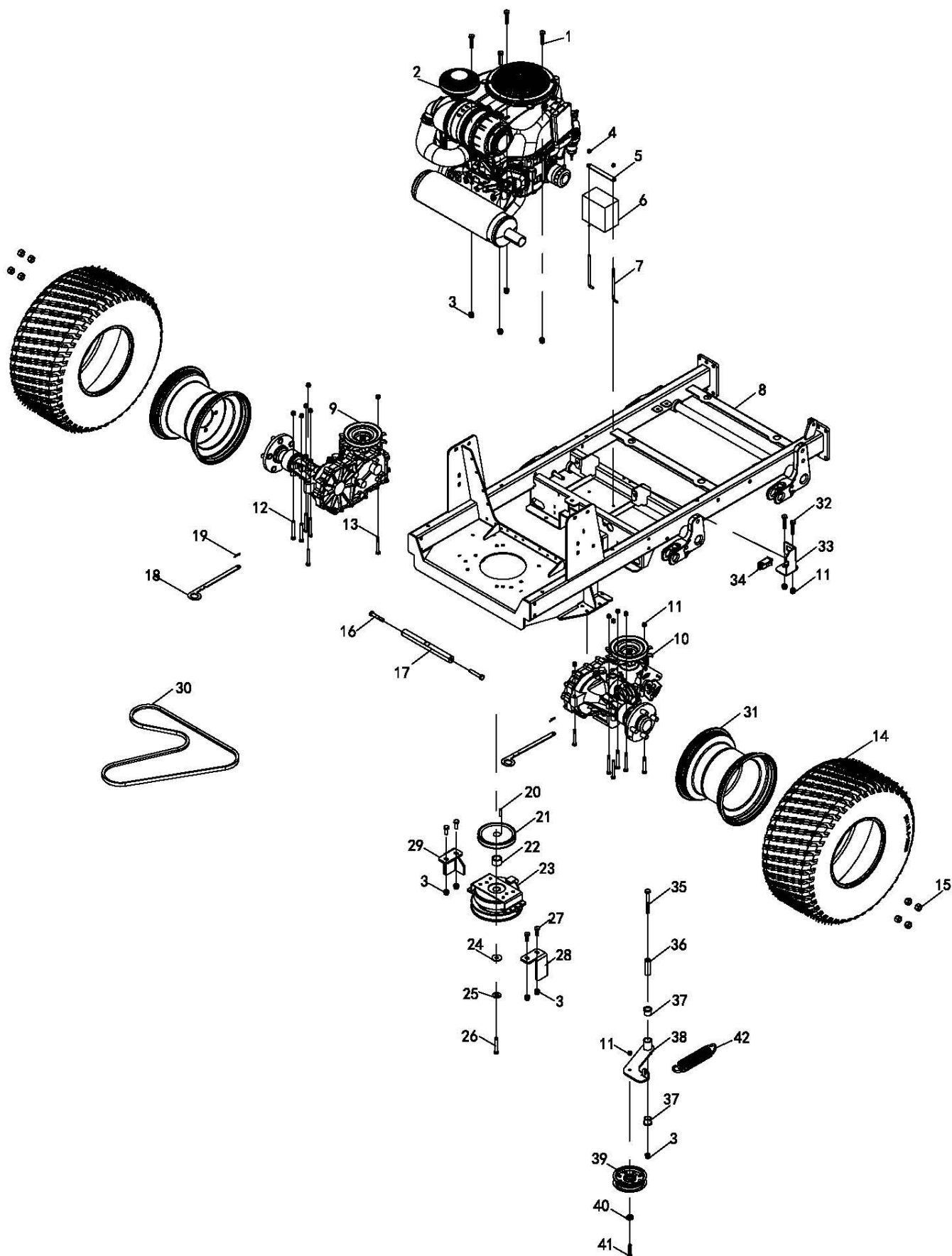


ITEM	PART NUMBER	DESCRIPTION	QTY
1	62ZTR24-049	Seat	1
2	62ZTR24-161	Seat Tie Rod Weldment	1
3	GB09-302	Quick-Change Pin 1.6×27.7	2
4	GB03-039	Washer 8	2
5	GB01-049	Hexagon Head Bolt M6×20	7
6	48ZTRC25-071	Front Panel Weldment	1
7	GB01-101	Hexagon Head Bolt M8×20	5
8	GB02-035	Nylon Lock Nut M10	6
9	GB03-043	Washer 10	4
10	GB01-178	Hexagon Head Bolt M10×30	2
11	GB02-011	Nylon Lock Nut M6	7
12	48ZTRC25-072	Seat Bracket Weldment	1
13	GB01-567	Hexagon Head Bolt M8×120	1
14	62ZTR24-051	Seat Locking Weldment	1
15	62ZTR24-156	Seat Torsion Spring	1
16	GB02-024	Nylon Lock Nut M8	12
17	48ZTRC25-069	Switch Fixing Plate Left	1
18	35ZTR22-003	Parking Switch (4-Pin NC)	2
19	48ZTRC25-070	Switch Fixing Part Right	1
20	GB03-076	Tapered Spring Washer 8	1
21	GB03-040	Large Washer 8	1
22	48ZTRC25-074	Parking Handle Weldment	1
23	GB01-098	Round Head Square Neck Bolt M8×20	4
24	GB04-079	Insert Ball Bearing with Stamped Diamond Seat UBPF204	2
25	48ZTRC25-093	Small Washer	3
26	48ZTRC25-077	Parking Pull Plate Connector Left	1
27	GB01-114	Hexagon Head Bolt M8×25	3
28	48ZTRC25-078	Parking Return Pull Plate Weldment	1
29	48ZTRC25-076	Parking Pull Plate Connector Right	1
30	48ZTRC25-079	Parking Swing Arm Weldment	1
31	GB09-038	Circlip for Shaft Type B 20	1
32	GB01-216	Hexagon Head Bolt M10×100	4
33	62ZTR24-070	Seat Rubber Damper	2
34	GB03-006	Spring Washer 10	2
35	GB02-036	Hexagon Nut M10	2
36	48ZTRC25-067	Seat Base	1
37	48ZTRC25-075	Park handle bushing	1



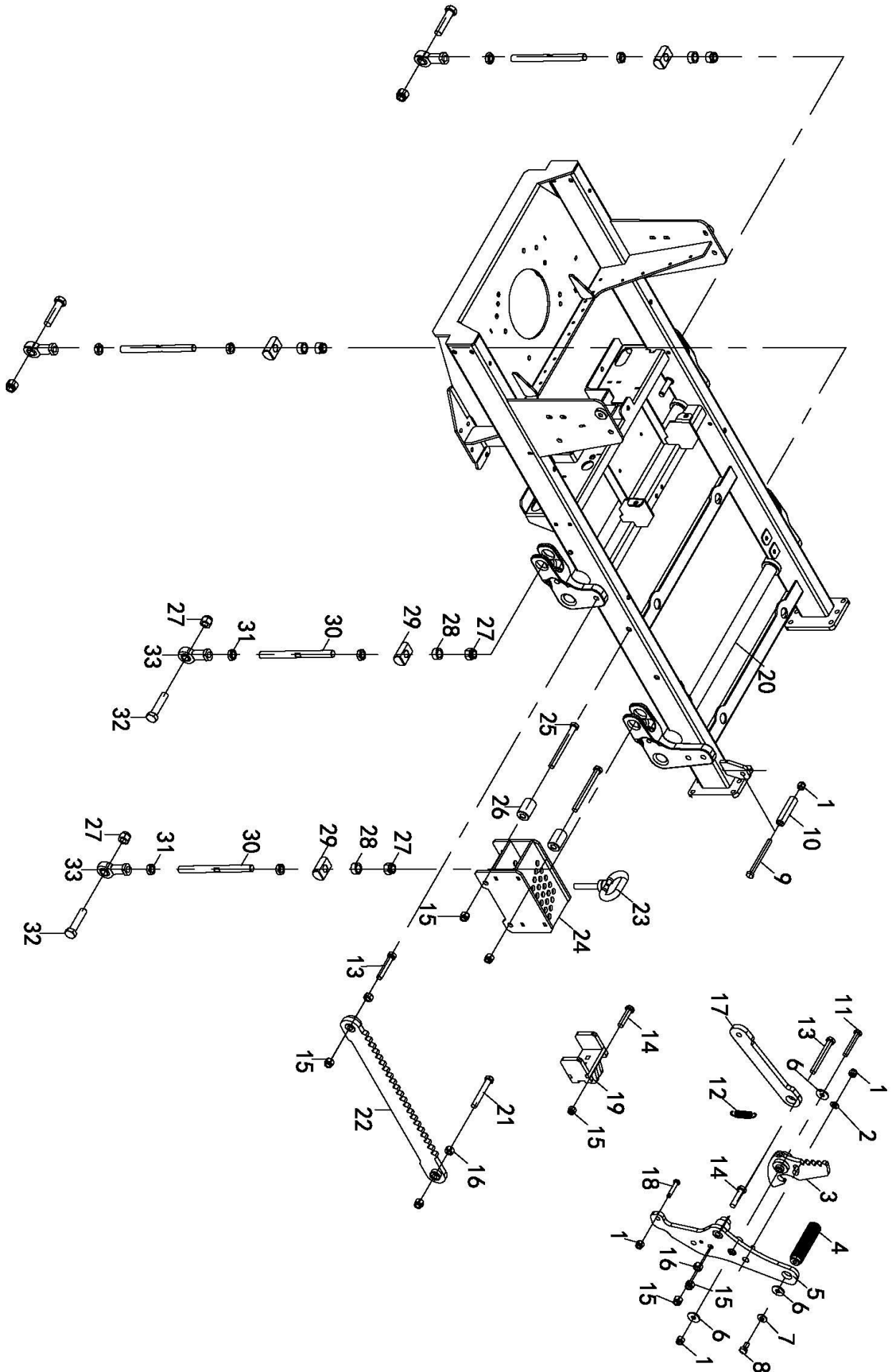


ITEM	PART NUMBER	DESCRIPTION	QTY
1	62ZTR24-062	Handle Cover	2
2	48ZTRC25-084	Handle Grip	2
3	48ZTRC25-082	Handle Weldment	2
4	GB01-395	Round Head Square Neck Bolt M12×50	2
5	48ZTRC25-092	Right Control Handle Weldment	1
6	62ZTR24-104	Armrest Locking Disc	2
7	48ZTRC25-083	Armrest Washer	2
8	48ZTRC25-081	Left Control Handle Weldment	1
9	GB02-060	Nylon Lock Nut M12	6
10	48ZTRC25-085	Limit Spring	2
11	GB02-035	Nylon Lock Nut M10	14
12	GB01-650	Round Head Square Neck Bolt M10×90	2
13	48ZTRC25-072	Seat Bracket Weldment	1
14	GB04-131	Deep Groove Ball Bearing 61901	4
15	48ZTRC25-088	Stainless Steel Washer	2
16	48ZTRC25-089	Swing Arm Support Pin	2
17	48ZTRC25-087	Swing Arm Stainless Steel Washer	4
18	GB04-024	Deep Groove Ball Bearing 6201	4
19	GB01-627	Hexagon Head Bolt M12×150	2
20	GB01-116	Hexagon Head Bolt M8×30	4
21	GB02-022	Hexagon Nut M8	4
22	GB02-024	Nylon Lock Nut M8	4
23	35ZTR22-164	Bidirectional Damper	2
24	GB01-597	Hexagon Head Bolt M10×55	4
25	48ZTRC25-090	Drive Swing Arm Bushing	4
26	48ZTRC25-043	Upper Drive Tie Rod	2
27	GB09-157	Circlip 9	2
28	36ZTS23-080	Small Bushing	4
29	GB04-080	Deep Groove Ball Bearing 61801	4
30	48ZTRC25-044	Lower Drive Tie Rod	2
31	GB01-184	Hexagon Head Bolt Full Thread M10×35	6
32	GB01-178	Hexagon Head Bolt M10×30	2
33	GB04-003	Threaded Type Joint Bearing [JBC10]	4
34	GB02-036	Hexagon Nut M10	4
35	48ZTRC25-042	Drive Swing Arm Weldment	2
36	GB02-030	Hexagon Nut M10 Left-Hand Thread	4
37	GB04-004	Threaded Type Joint Bearing [JBC10] Left-Hand Thread	4
38	48ZTRC25-080	The left welded part of the driving arm	1
39	48ZTRC25-091	The right welded part of the driving arm	1



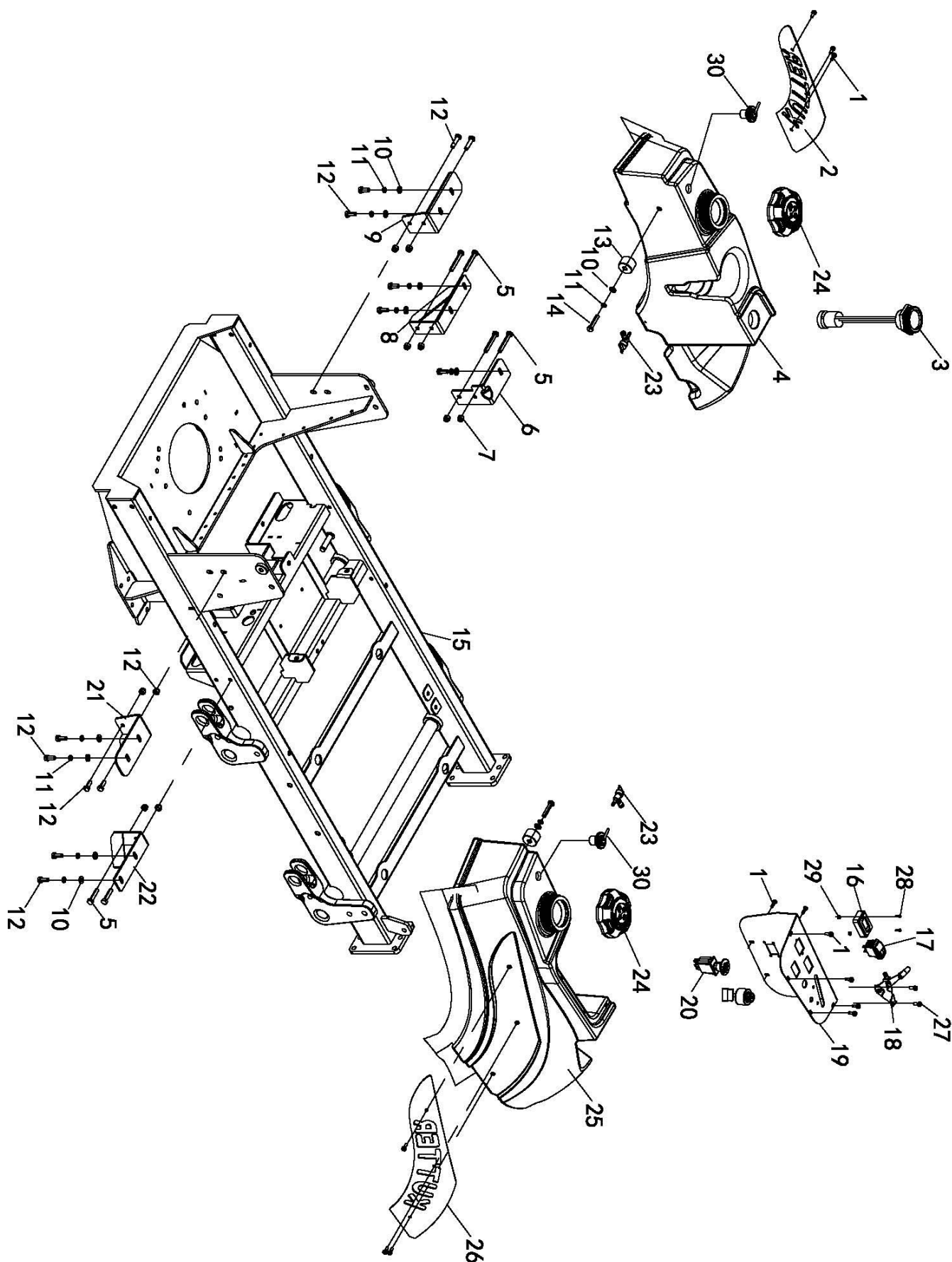


ITEM	PART NUMBER	DESCRIPTION	QTY
1	GB01-192	Hexagon Head Bolt M10×45	4
2	48ZTRC25-106	Zongshen XP750 Engine	1
3	GB02-035	Nylon Lock Nut M10	9
4	GB02-011	Nylon Lock Nut M6	2
5	62ZTR25-239	Battery Pressure Plate	1
6	62ZTR25-237	Start-up Lithium Battery	1
7	62ZTR25-232	Battery Tie Rod	2
8	48ZTRC25-032	Frame Weldment	1
9	HG3800-001	ZT-3800 Short Shaft Hydraulic Pump - Left	1
10	HG3800-002	ZT-3800 Short Shaft Hydraulic Pump - Right	1
11	GB02-024	Nylon Lock Nut M8	15
12	GB01-144	Hexagon Head Bolt M8×70	8
13	GB01-143	Hexagon Head Bolt M8×60	4
14	48ZTRC25-112	23×10.5-12 Tire	2
15	34GFM21-163	1/2"-20 Hub Nut	8
16	GB01-597	Hexagon Head Bolt M10×55	2
17	48ZTRC25-040	Bottom Connecting Shaft	1
18	62ZTR24-189	Oil Discharge Pull Plate	2
19	SZJ21-130	Type B Pin	2
20	GB09-288	Flat Key Type C 6.35x6.35x20	1
21	48ZTRC25-099	Drive Pulley	1
22	48ZTRC25-097	Clutch Bushing	1
23	48ZTRC25-103	Clutch GT2.75 - Bore Diameter 25.4	1
24	48ZTRC25-098	Clutch Washer	1
25	GB03-092	Tapered Spring Washer 12	1
26	GB01-653	Fractional Bolt 7/16"-20 × 1 1/2"	1
27	GB01-167	Hexagon Head Bolt M10×25	4
28	48ZTRC25-096	Right Clutch Support Plate	1
29	48ZTRC25-095	Left Clutch Support Plate	1
30	48ZTRC25-057	Drive Belt 1755 Inner (1805 Outer, Type A Belt)	1
31	48ZTRC25-113	Rim 12×10.5	2
32	GB01-101	Hexagon Head Bolt M8×20	2
33	48ZTRC25-105	Parking Switch Bracket	1
34	35ZTR22-003	Parking Switch (4-Pin NC)	1
35	GB01-214	Hexagon Head Bolt M10×90	1
36	48ZTRC25-056	Drive Tensioner Pulley Inner Sleeve	1
37	62ZTR24-075	Plain Bearing 2023-29-21	2
38	48ZTRC25-055	Drive Tensioner Swing Arm Weldment	1
39	35ZTR22-053	Travel pulley	1
40	35ZTR22-059	Upper Pressure Sleeve	1
41	GB01-134	Hexagon Head Bolt M8×45	1
42	35ZTR22-153	Travel Belt Tension Spring	1



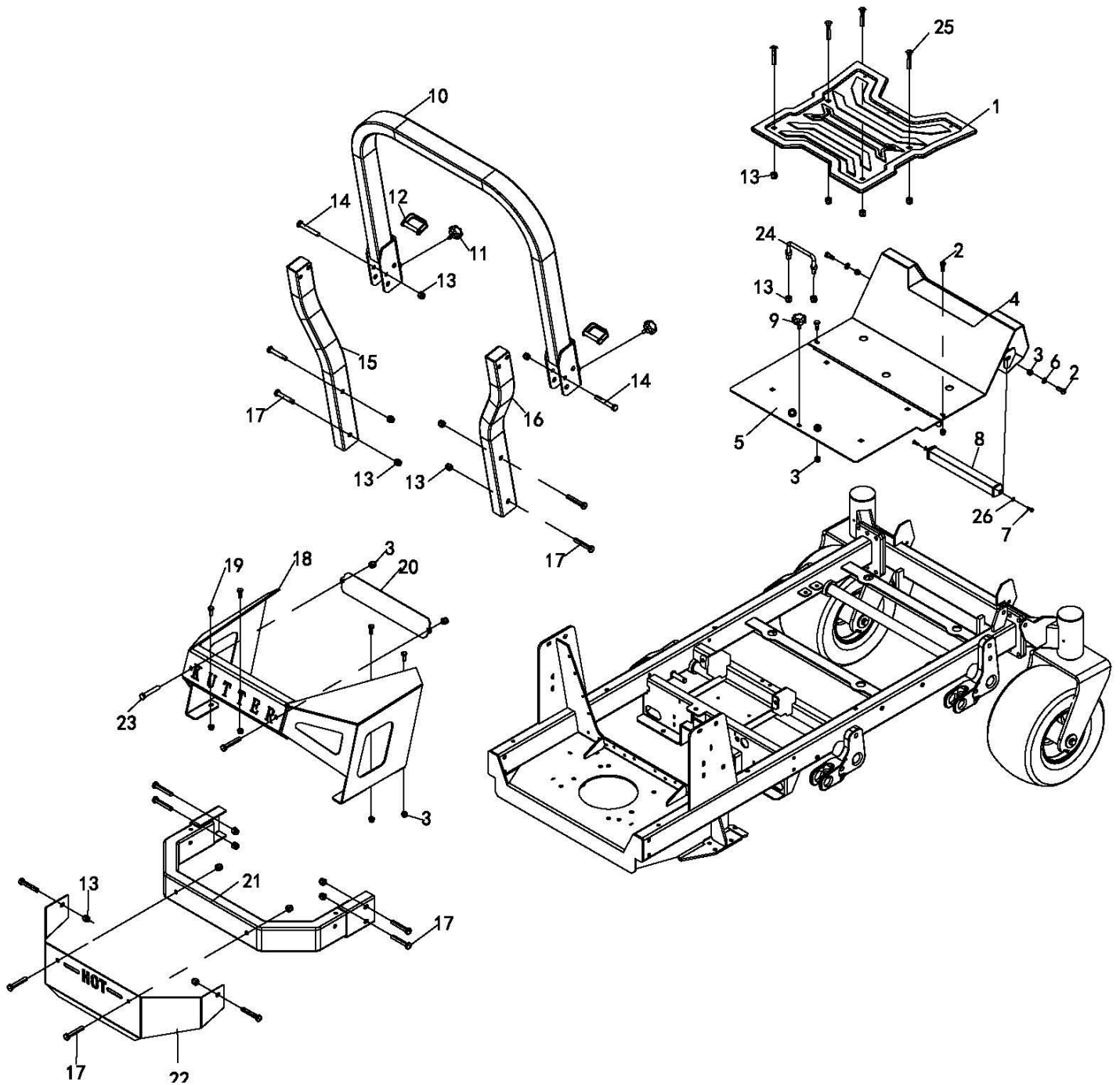


ITEM	PART NUMBER	DESCRIPTION	QTY
1	GB02-035	Nylon Lock Nut M10	4
2	GB03-043	Washer 10	1
3	48ZTRC25-047	Pawl Weldment	1
4	48ZTRC25-048	Pedal Shaft	1
5	48ZTRC25-045	Pawl Weldment	1
6	GB03-135	Washer 30*10.5*3	3
7	GB03-027	Tapered Spring Washer 10	1
8	GB01-160	Hexagon Head Bolt M10×20	1
9	GB01-428	Hexagon Head Bolt M10×110	1
10	48ZTRC25-050	Height Adjustment Sleeve Lock	1
11	GB01-478	Hexagon Head Flange Bolt M10×65	1
12	62ZTR24-084	Pawl Spring	1
13	GB01-596	Hexagon Head Bolt M12×70	2
14	GB01-441	Hexagon Head Bolt M12×50	2
15	GB02-060	Nylon Lock Nut M12	7
16	GB02-043	Hexagon Nut M12	3
17	48ZTRC25-051	Connecting Plate Foot Pedal	1
18	GB01-335	Round Head Square Neck Bolt M10×45	1
19	48ZTRC25-049	Slider Weldment	1
20	48ZTRC25-032	Frame Weldment	1
21	GB01-240	Hexagon Head Bolt M12×80	1
22	48ZTRC25-041	Front and Rear Outer Swing Arm Weldment	1
23	62ZTR24-090	Height Adjustment Pin Weldment	1
24	48ZTRC25-038	Index Plate Weldment	1
25	GB01-435	Hexagon Head Bolt M12×135	2
26	48ZTRC25-039	Height Adjustment Bushing	2
27	GB02-061	Nylon Lock Nut M16	8
28	62ZTR24-040	Height Adjustment Small Bushing	4
29	62ZTR24-038	Height Adjustment Lock Pin	4
30	48ZTRC25-104	Height Tie Rod	4
31	GB02-063	Hexagon Nut M16	8
32	GB01-255	Hexagon Head Bolt M16×65	4
33	GB04-118	Joint Bearing M16	4





ITEM	PART NUMBER	DESCRIPTION	QTY
1	GB01-477	Combination Part of Cross Recessed Pan Head Screw, Spring Washer and Plain Washer M5×16	12
2	48ZTRC25-028	Left Decorative Plate	1
3	48ZTRC25-107	Mechanical Oil Gauge	1
4	48ZTRC25-026	Left Fuel Tank	1
5	GB01-341	Hexagon Head Bolt M8×55	6
6	48ZTRC25-066	Left Front Fixing Weldment	1
7	GB02-024	Nylon Lock Nut M8	10
8	48ZTRC25-065	Left Front Fixing Weldment	1
9	48ZTRC25-063	Left Rear Fixing Weldment	1
10	GB03-040	Washer 8	11
11	GB03-005	Spring Washer 8	11
12	GB01-101	Hexagon Head Bolt M8×20	15
13	48ZTRC25-094	Fuel Tank Bushing	2
14	GB01-131	Hexagon Head Bolt Full Thread M8×40	2
15	48ZTRC25-032	Frame Weldment	1
16	35ZTR22-038	Hour meter	1
17	35STM22-170	Light Switch	1
18	62ZTR25-240	Throttle Cable	1
19	48ZTRC25-061	Control Panel	1
20	35STM22-312	Blade Electromagnetic Clutch Switch	1
21	48ZTRC25-062	Right Rear Fixing Weldment	1
22	48ZTRC25-064	Right Front Fuel Tank Fixing Weldment	1
23	35STM23-332	Fuel Tank Switch	2
24	62ZTR24-211	Fuel Tank Cap	2
25	48ZTRC25-025	Right Fuel Tank	1
26	48ZTRC25-027	Right Decorative Plate	1
27	GB01-640	Combination Part of Cross Recessed Pan Head Screw, Spring Washer and Plain Washer M4×12	2
28	GB01-008	Cross Recessed Pan Head Screw M3×12	2
29	GB02-001	Nylon Lock Nut M3	2
30	62ZTR24-202	Exhaust Valve	2





ITEM	PART NUMBER	DESCRIPTION	QTY
1	48ZTRC25-110	48/54ZTR Universal Non-Slip Foot Pad	1
2	GB01-101	Hexagon Head Bolt M8×20	4
3	GB02-024	Nylon Lock Nut M8	10
4	48ZTRC25-059	Front Pedal Weldment	1
5	48ZTRC25-060	Rear Pedal Weldment	1
6	GB03-039	Washer 8	2
7	GB01-051	Socket Head Cap Screw M5×12	2
8	35STM22-210	Single-Row Long Strip LED Light	1
9	62ZTR24-176	Pedal M8 Flange Bolt	1
10	48ZTRC25-029	Upper Bumper Weldment	1
11	62ZTR24-144	Flange Bolt M8	2
12	62ZTR24-145	Bumper Pin	2
13	GB02-035	Nylon Lock Nut M10	20
14	GB01-283	Hexagon Head Bolt M10×70	2
15	48ZTRC25-030	Left Lower Bumper Weldment	1
16	48ZTRC25-031	Right Lower Bumper Weldment	1
17	GB01-203	Hexagon Head Bolt M10×60	12
18	48ZTRC25-053	Rear Guard Weldment	1
19	GB01-648	Hexagon Head Bolt M8×100	4
20	48ZTRC25-101	Liner Plate	1
21	48ZTRC25-054	Rear Bumper	1
22	48ZTRC25-052	Lower Rear Guard	1
23	GB01-098	Round Head Square Neck Bolt M8×20	2
24	62ZTR24-175	Stainless Steel Folding Handle M10	1
25	34GFM20-012	Round Head Square Neck Bolt M10×20	4
26	GB03-031	Washer 5	2



The Importance of Maintenance

Regular maintenance is essential to ensure your mower continues to deliver safe and high-quality performance.

To help you properly care for your mower, the following pages include a recommended maintenance schedule, routine inspection procedures, and simple maintenance procedures using basic hand tools. Maintenance is the responsibility of the owner and must be performed regularly. More difficult service tasks or tasks that require special tools are best handled by a recommended service technician or other qualified mechanic.

The maintenance schedule described on page 20 applies to mowers used under normal operating conditions. If you operate your mower under severe conditions, such as sustained prolonged use or high-temperature operations, or use it in unusually wet, dusty or rocky conditions, consult your servicing dealer for recommendations applicable to your individual needs and use.

Be sure to use genuine Early Bird mower replacement parts when servicing your mower to assure the best quality, safety and performance.

Need Help? Parts, Service and Technical Assistance
Call: 400-188-6691 www.jadeequipments.com.

Fuel



DANGER: Gasoline is highly flammable and explosive. Do not add fuel while the engine is running or is hot. Keep open flames, sparks, and heat away from the fuel and store fuel in containers specifically designed for that purpose. Add fuel outdoors only and if the fuel is spilled, do not start the engine. Manually push the mower away from the spill and wipe up immediately.

Refer to the Engine Owner's Manual for the type of fuel to use.

A fuel shut off valve is located on the bottom of the fuel tank. It is recommended that the fuel be shut off when transporting between job sites and when storing the mower for extended periods of time.



CAUTION

CAUTION! Before making any adjustments and/or servicing to your Early Bird mower, make sure the mower is on a level surface, with the ignition switch off, the key removed, the brake set, and the blades disengaged. Also, disconnect the spark plug wires from the spark plugs and ground them against the engine to prevent inadvertent starting.

If you are performing adjustments or maintenance after operating the mower, allow the unit to cool and always wear protective clothing.

Tire Pressure

Incorrect tire pressure may cause the mower to pull to one side and/or result in uneven cut. Use caution when filling the tires. NEVER exceed the recommended maximum tire pressure as stated on the tires.

Air Filter

Refer to the Engine Owner's Manual for the recommended maintenance.

Engine Oil

CHECK ENGINE OIL BEFORE EACH USE. Refer to the Engine Owner's Manual for the type of oil to use, oil change intervals, and the proper procedures to check and change oil.

Blades

Inspect blades on a daily basis for nicks, bends, and excessive wear. If the blades are worn, cracked, bent, or damaged, replace them before using the mower. Choose genuine Early Bird mower replacement blades to ensure quality and performance.

When sharpening the blades, sharpen only the cutting edges and try to maintain the original angle of the blade. Do not make the cutting edge razor sharp. Remove the same amount from each side of the blade so that balance is maintained.



CAUTION

CAUTION: Always wear work gloves when performing blade maintenance and beware of the cutting edges. Be sure the engine is off, the key removed, and the spark plug wires are disconnected from the spark plugs to prevent inadvertent starting.



Item	Procedure	Time Interval				
		Break-in (first 5 hrs)	Every 8 hrs (daily)	Every 40 hrs (weekly)	Every 100 hrs (Bi-weekly)	Every 200 hrs (monthly)
Belts	Inspect (adjust if needed)	X	X			
Blades	Inspect and/or Sharpen		X			
Engine Air Filter	Inspect (see Engine Owner's Manual)		X			
Engine Cooling Areas	Clean (see Engine Owner's Manual)		X			
Engine Oil	Check (see Engine Owner's Manual)	X	X			
	Change (see Engine Owner's Manual)					
Engine Oil Filter	Change (see Engine Owner's Manual)					
Engine Spark Plug	Inspect (see Engine Owner's Manual)				X	
Fuel Filter	Replace				X	
Fuel Line	Check				X	
Hardware	Check for proper tightness	X		X		
Mower Main Frame	Remove debris from under belt cover		X			
Safety Interlock System	Check Operations and Switches		X			
Tires	Check Air Pressure			X		
Spindle/Blade Brakes			X			

Cleaning the Mower

It is recommended that the Early Bird lawn mower be cleaned on a daily basis. Excessive accumulation of dirt, debris, oil, etc. on cutting units, drives, mufflers, and engine may present a potential safety hazard.

**Short Term Storage**

- Let engine cool before storing and do not store near flame, high heat, and possible ignitions from sparks.
 - Always clean off all flammable material as well as grime and dirt before storage.
 - Never use a pressure washer and avoid drenching the control panel, motor, engine, and hydro pumps with water.
 - Wash with mild detergent and water only.
 - After washing the machine engage the engine at high and let the mower run for 5 minutes.
 - Shut off fuel for storing or transporting.
 - Carefully release pressure from components with stored energy.
 - Store mower only on the ground.
 - Do not drain fuel indoors or near a flame.
 - Use jack stands to support components when required.
 - Always park machine on level ground and set the parking brake when storing.
 - Store the machine in a clean and dry environment.
 - Always remove the key from the ignition.
 - Add a petroleum based conditioner in the gas tank and run for 5 minutes to distribute through mower.
-

Extended Storage

- Change air filter.
- Make sure all fuel is drained before storing.
- To ensure all fuel is drained from the mower, run the mower until it runs out of gas before storage.
- Check the spark plugs condition and pour two tablespoons of engine oil in the spark plug holes and leave the spark plugs off.
- Cover the machine when in storage.
- Remove Battery and clean terminals and cable connectors. Store battery in a cool dry place.
- Everything mentioned in short term storage should also be applied to extended storage.



Problem	Possible Causes	Solution
Engine will not start	<ol style="list-style-type: none"> 1. Key in the OFF position 2. Insufficient fuel in the tank 3. Air bubble in the fuel line 4. Fuel valve in OFF position 5. Choke not ON 6. Choke linkage out of adjustment 7. Low engine oil 8. Blade control in ON position 9. Loose spark plug wire 10. Fouled spark plug 11. Plugged or dirty air filter 12. Bad gasoline 13. Plugged or dirty fuel filter 14. Safety switches out of alignment or loose 15. Dead battery (electric start models) 	<ol style="list-style-type: none"> 1. Turn key to ON position 2. Add gasoline 3. Prime engine or shake bubble out 4. Turn valve ON 5. Turn choke ON 6. Refer to Engine Owner's Manual 7. Add engine oil 8. Push lever to OFF position 9. Tighten wire or connections 10. Clean or replace the plug 11. Clean or replace the air filter 12. Drain and replace with fresh gasoline 13. Replace the fuel filter 14. Adjust or tighten switches - read warnings! 15. Recharge or replace battery
Engine will not keep running/quits	<ol style="list-style-type: none"> 1. Water in the fuel 2. Loose safety switch 3. Fuel valve is OFF 4. Dirty fuel filter 5. Dirty air filter 6. Low engine oil 	<ol style="list-style-type: none"> 1. Drain and replace with fresh fuel 2. Adjust switch 3. Turn fuel valve ON 4. Replace fuel filter 5. Clean or replace air filter 6. Add engine oil
Engine stops when blades are engaged	<ol style="list-style-type: none"> 1. Loose safety switch 2. Belt tension too high 3. Blades jammed with foreign material 	<ol style="list-style-type: none"> 1. Adjust switch 2. Adjust belt 3. Remove foreign material
Blades do not turn	<ol style="list-style-type: none"> 1. Broken belt 2. Blade activation linkage out of adjustment. 	<ol style="list-style-type: none"> 1. Replace belt 2. Adjust linkage
Belts squeal when blades are engaged	<ol style="list-style-type: none"> 1. Excessive belt wear 	<ol style="list-style-type: none"> 1. Replace belt
Belts slip when blades are engaged	<ol style="list-style-type: none"> 1. Excessive belt wear 	<ol style="list-style-type: none"> 1. Replace belt



Problem	Possible Causes	Solution
Mower will not move forward or reverse	<ol style="list-style-type: none"> 1. Brake ON 2. Bypass levers pulled out 	<ol style="list-style-type: none"> 1. Release brake on control panel 2. Ensure bypass pins are retracted
Cannot move mower when the engine is off	<ol style="list-style-type: none"> 1. Bypass not engaged 	Pull left and right bypass handle and set them in slots in the chassis
Engine is overheating	<ol style="list-style-type: none"> 1. Dirt in the fuel line 2. Dirty air filter 3. Low engine oil 4. Fouled spark plug 5. Misuse of the mower 6. Dull blades 7. Spindle bearing failure 	<ol style="list-style-type: none"> 1. Replace fuel filter and flush tank 2. Clean or replace the air filter 3. Add engine oil 4. Replace spark plug 5. Mow slower, wait for grass to dry out 6. Sharpen cutting blades 7. Take in for service
Grass not cut smoothly or cleanly	<ol style="list-style-type: none"> 1. Dull blades 2. Mowing too fast for conditions 3. Grass is wet or bent over 4. Blade is bent 5. Tire pressure not equal 6. Deck is set at uneven heights 7. Blades are set upside down 8. Excessive grass and debris build up underneath the deck 	<ol style="list-style-type: none"> 1. Sharpen blades 2. Slow down while cutting 3. Let grass dry to stand up 4. Replace blade 5. Add air pressure to low tires 6. Set deck at equal heights 7. Take blades off and install correctly 8. Clean out debris
Mower always pulls to one side	<ol style="list-style-type: none"> 1. Controls out of adjustment 2. Transmission failure 	<ol style="list-style-type: none"> 1. Adjust controls 2. Take in for service

Please indicate the part that you are

☐ Other

Name

Address

Phone

Email

☐ Date of purchase

Model #:

☐ Serial #:

Comments:

IMPORTANT: Please include your receipt. Without a receipt, your order will be delayed. You may also email us at:

E-mail: sales@jadeequipments.com

Fax: 400-188-6691

If emailing, please scan in your proof of purchase.



Products Covered by this Warranty	Length of Warranty: *(from the date of original retail purchase)		
	Residential	Commercial	Rental
Engine	Manufacturer's warranty	Manufacturer's warranty	Manufacturer's warranty
Transmission	Manufacturer's warranty	Manufacturer's warranty	Manufacturer's warranty
Mower frame	Lifetime (original owner only)	Lifetime (original owner only)	90 days
Belts, Tires, Battery	90 days	90 days	90 days
Attachments	1 yr limited	1 yr limited	30 day limited

*LENGTH OF WARRANTY: Batteries supplied with applicable products as standard, original equipment are covered by this warranty for a period of 90 days from the date of original retail product purchase. Consumable parts such as oil, spark plugs, filters, and blades are not covered by this warranty.

To Qualify for this Warranty

The product must be purchased from a dealer authorized by Jade Outdoor Power Equipment.,Ltd to sell those products. This warranty applies to first retail purchaser/owner during the applicable warranty time period. **SAVE YOUR PROOF OF PURCHASE RECEIPT. MUST HAVE PROOF OF PURCHASE TO OBTAIN WARRANTY.**

What JADE Outdoor Power Will Repair or Replace under Warranty

JADE will repair or replace, at its option, any part that is proven to be **defective in material or workmanship** under normal use during the applicable warranty time period subject to the exclusions stated herein. This warranty is void if the owner fails to follow the prescribed maintenance and operating procedures described in this manual. This specifically refers to ensuring routine lubrications and oil changes are made, that fuel stabilizer is used when the product is stored and that the product is not overloaded.

JADE has the right to recover warranty administration costs from the owner if the root cause of the malfunction is found to be other than defective material or workmanship. In particular, this warranty does not cover: contaminants in the fuel or oil; damage caused by not following the prescribed warnings and operating practices; failure to follow proper maintenance and storage procedures; and physical damage due to misuse, shipping, handling or storage.

Warranty repairs will be made without charge for parts and labor for the first year.

Anything replaced under warranty becomes the property of JADE. Parts replaced under warranty will be considered as part of the original product and any warranty on those parts will expire coincident with the original product warranty.

To Obtain Warranty Service

You must take the Early Bird product, accessory, replacement part, apparel or the power equipment on which the accessory or replacement part is installed, and proof of purchase, at your expense, to any Early Bird service location in the world, who is authorized to service that product, during the service location's normal business hours. If you are unable to obtain warranty service, or are dissatisfied with the warranty service you receive, take the following steps: First, contact the manager of the service center involved; normally this will resolve the problem. However, if you should require further assistance, write or call the JADE Parts & Service, LLC 400-188-6691

Exclusions

This warranty does not cover: normal wear, contaminants in the fuel or oil; damage as a result of use in an application for which the product was not designed; damage caused by incorporation or use of unsuitable attachments or parts, unauthorized alteration, or other misuse and neglect; damage caused by failure to follow the prescribed warnings, operating practices, proper maintenance and storage procedures; parts affected or damaged by accident and/or collision; damage due to shipping, handling, storage or any causes other than defects in material or workmanship of the product.

Disclaimer of Consequential Damage and Limitation of Implied Warranties

JADE disclaims any responsibility for loss of time or use of the product, transportation, commercial loss, or any other incidental or consequential damage. Any implied warranties are limited to the duration of this written limited warranty.

THIS WARRANTY IS VOID IF THE MANUFACTURING DATE AND THE SERIAL NUMBER ON THE EQUIPMENT HAS BEEN REMOVED OR THE EQUIPMENT HAS BEEN MODIFIED.