

# Early Bird Lawn Mower

## Owner's Manual

This manual contains important safety instructions for the gasoline engine powered lawnmower models: JADE-72ZTR

**READ SAFETY WARNINGS AND OPERATING INSTRUCTIONS CAREFULLY.  
SAVE THIS MANUAL.**



### Need Help?

Parts, Service

When you call the help-line you will need to have the following information:

Date of Purchase: \_\_\_\_\_  
Location of Purchase: \_\_\_\_\_  
Serial # - Mower: \_\_\_\_\_  
Serial # - Engine: \_\_\_\_\_  
Serial # - Hydro Trans (L) \_\_\_\_\_  
Serial # - Hydro Trans (R) \_\_\_\_\_

Mower and engine life are extended greatly by performing frequent lubrications, oil changes and regular maintenance. To protect your investment perform routine maintenance.



Copyright© 2023 by Liaocheng Jade Outdoor Power Equipment.,Ltd. All rights reserved.  
No part of this publication can be reproduced or distributed without prior written permission of Liaocheng Jade Outdoor Power Equipment.,Ltd

Early Bird is a registered trademark of Liaocheng Jade Outdoor Power Equipment.,Ltd

Liaocheng Jade Outdoor Power Equipment.,Ltd reserves the right to discontinue or change specifications or design at any time without notice and without incurring any obligation whatsoever.

The information and specifications included in this publication were in effect at the time of approval for printing.



**This manual contains important safety instructions for Finish Mowers**  
**READ SAFETY WARNINGS AND OPERATING INSTRUCTIONS CAREFULLY**  
**SAVE THESE INSTRUCTIONS.**

**This owner's manual is considered a permanent part of the finish mower and should remain with the finish mower if resold.**

## Contents

Safety Information and Warnings .....	1
Preparation Safety Precautions .....	2
Operation Safety Precautions .....	3,4
Slope Diagram .....	5
Safety Decals .....	6
Product Specifications .....	7
Control Panel and Lawn Mower Components .....	8
Operating Instructions	
Starting the Engine .....	9
Operating the Mower .....	10
Changing the Height of Cut.....	11
Spare Parts .....	12-28
General Maintenance.....	29
Maintenance Schedule.....	30
Storage Instructions .....	31
Troubleshooting .....	32, 33
Missing Parts Request Form.....	34
Limited Warranty and Service.....	35

## About the JADE-ZTR72 Mower Manual

Congratulations on the purchase of your new JADE-ZTR72 Mower . We at Jade Outdoor Power Equipment are confident that this mower will provide excellent performance, outstanding quality, and great durability when operated and maintained as directed in this manual.

1. This manual contains assembly, operating, safety, adjustment, maintenance, and troubleshooting instructions. BEFORE OPERATING YOUR LAWN MOWER, CAREFULLY READ THIS MANUAL IN ITS ENTIRITY.
2. This owner's manual is considered a permanent part of the mower. It must be available to all operators and/or person(s) servicing the mower. Should the mower be resold, this manual must remain with the mower.
3. All information, illustrations, and specifications contained in this manual were in effect at the time of the publication. Jade Outdoor Power Equipment reserves the right to add, delete or modify specifications and/or designs without notice.
4. If you ever have questions in regards to the operation, maintenance or safety of your mower, please contact the JADE Parts & Service, LLC at 400-188-6691.

**Safety Information**

JADE-ZTR72 lawn mowers are designed to give safe and dependable service if operated according to instructions. Read and understand this owner's manual before operating your lawn mower.

**Emission Control System Information**The U.S. and California Clean Air Acts

EPA and California regulations require all manufacturers to furnish written instructions describing the operation and maintenance of emission control systems. The following instructions and procedures must be followed in order to keep the emissions from your engine within the emission standards.

**Safety Label Locations**

Safety labels are located on your mower to warn you of potential hazards. Read them carefully. If a label comes off or becomes hard to read, contact your JADE Parts and Service, LLC for a replacement.

**Operator Responsibility**

It is the owner's responsibility that all operators and mechanics must be trained and read this manual before operating the mower as well as being physically able individuals. They should be instructed about safe operating and mechanical procedures. If they can not read or understand English, it is the owner's responsibility to explain all safety operating instructions. The owner or operator is responsible for accidents or injuries occurring to themselves, other people or property. Potential misfortunate incidents can be prevented by the owner/user.

**Mower Inspection**

For your safety, inspect the lawn mower before each use. Before you begin your inspection, be sure the following conditions are met: the lawn mower should be on a level surface, with the ignition switch off, the key removed, the break set, and the blades disengaged. Also, disconnect the spark plug wires from the spark plugs and ground them against the engine to prevent inadvertent starting.

1. Walk around the mower and look for any fluid spills or leaks on or underneath the mower. Remove any and all excessive debris, dirt, and fluids.

2. Look for signs of damage or excessive wear. Check the tightness of all nuts, bolts, pins, and screws. Tighten any that may be loose and replace any that are missing.
3. Be sure the safety interlock controls are operating properly so that the engine cannot be started unless the ground speed control lever is in neutral and the blades are disengaged.
4. Check the mower blades for any damage or abnormal wear. If replacement is required, replace in sets so that they are balanced.
5. Check the tire pressure on all four tires. Do not exceed the recommended maximum indicated on the tire.
6. Check the belts for wear and correct tension.
7. Check engine oil and air filters as recommended in the engine manufacturer's manual.

**Children**

1. Never allow children to operate or ride on mowers.
2. Always keep children at a safe distance when operating or servicing a mower
3. Make sure to always look out for children before you make turns or reverse.
4. Never let children or untrained people operate or service the equipment. Local regulations may



**WARNING!** Do not use your Early Bird lawn mower to carry passengers. Keep bystanders, helpers, pets and children at a safe distance from the machine while it is in operation. Inspect the area where the equipment is to be used and remove all objects such as rocks, toys, and wires which can be thrown by the machine causing serious injury or death.



Wear appropriate clothing including hard hat, safety glasses and hearing protection. Long hair, loose clothing or jewelry may get tangled in moving parts.

**Preparation—Safety Precautions**

1. Evaluate the terrain to determine what accessories and attachments are needed to properly and safely perform the job. Only use accessories and attachments approved by JADE.
2. Inspect the area where the equipment is to be used and remove all objects such as rocks, toys, and wire which can be thrown by the machine causing serious injury or death.
3. People, pets, and most importantly children must not be near the area being mowed. Do not operate the mower in their presence.
4. Never operate mower with damaged guards, shields or covers.
5. All users of the mower must be alert and pay attention to safety alerts, symbols, and safety signs.
6. Be sure to inspect mower before each use.
7. Always use roll bar when possible and never remove or modify the roll bar in any way or form.
8. Check the controls and shields to make sure that they are functioning properly before operating. Do not operate if any are damaged or missing.
9. Never operate with discharge deflector raised, removed or altered, unless a grass catcher is being used.
10. Install, and maintain in working order, a spark arrester before using equipment on forest-covered, grass-covered, or brush-covered unimproved land.

**Gasoline and other fuels—Safety Precautions**

Use extra care when handling gasoline and other fuels as they are flammable and vapors can explode.

1. Only use gasoline approved containers for storage and keep out of reach from children.
2. Do not fill fuel tank completely full. Overfilling may result in fuel leakage. Leave a reasonable amount of space for fuel to expand.
3. If fuel is spilled, do not start the engine. Move the mower away from the area, wipe up the spill thoroughly and wait until fuel vapors have evaporated before starting engine.
4. Do not fill gasoline containers inside a vehicle or on a truck/trailer bed.
5. Never remove gas cap or add fuel when engine is running.
6. Avoid prolonged breathing of gasoline vapors.
7. Never refuel or drain the machine indoors.
8. Keep face away from nozzle and gas tank opening.
9. Keep gas and other fuels away from skin and eyes.
10. Never use the mouth to siphon gas.
11. Never refuel the mower until all moving parts on the mower have stopped.

12. Never smoke when handling fuels and stay away from an open flame where fumes can be ignited by a spark.
13. Always place gasoline containers on the ground away from your vehicles prior to filling.
14. Gasoline is harmful or fatal if swallowed.



**DANGER: GASOLINE IS HIGHLY FLAMMABLE AND EXPLOSIVE.** Do not add fuel while the engine is running or is hot. Keep open flames, sparks, and heat away from the fuel and store fuel in containers specifically designed for that purpose. **ADD FUEL OUTDOORS ONLY. IF THE FUEL IS SPILLED, DO NOT START THE ENGINE.** Manually push the mower away from the spill and wipe up immediately.

**Equipment Operation—Safety Precautions**

1. Do not operate the engine in a confined space where dangerous carbon monoxide fumes can collect. Carbon monoxide is odorless, tasteless, and can be fatal.
2. Mow only in daylight or under good lighting conditions.
3. Make sure the mower is in neutral, parking brake is engaged, blades are disengaged, seat belt on, roll bar is raised and the operator is sitting in the proper position before attempting to start the engine.
4. Never operate on wet grass.
5. Watch for pedestrian or vehicular traffic when moving the mower while not in use (i.e., loading, unloading or transporting).
6. Never operate the mower with defective guards or shields, or without the safety devices securely mounted in place and functioning properly.
7. Be aware of discharge and never direct discharge of material toward bystanders nor allow anyone, especially children, near the mower during operation.
8. Do not change the governor settings or over speed the engine.
9. Always stop the engine when you leave the mower, even for a moment.
10. To help reduce fire hazard, keep the engine and the area around the engine free of grass, leaves or any other type of foreign material.
11. Beware of cutting edges. For safety always wear gloves when performing blade maintenance activities. Beware on multiple blade units since the rotation of one blade may cause the rotation of the other blade.
12. Do not operate the mower with the grass chute deflector in the raised position. Serious injury could occur.
13. If lightning is seen or thunder is heard in the operators vicinity, do not operate machine. Instead find shelter, as lightning may cause injury/death.
14. Never raise the mower deck while the blades are running.
15. Stop on a level ground, disengage drive, engage parking brake, and shut off engine before leaving operator's position for any reason including clearing grass catcher or unclogging the chute.
16. Stop the mower immediately and inspect blades after striking objects or if an abnormal vibration occurs and discontinue use until repaired.
17. Keep hands and feet away from cutting unit. This product is capable of amputating hands and feet and throwing objects.
18. Be alert and slow down when making turns. Also look left, right, and behind before changing directions and reversing to be sure there is a clear path.
19. Disengage blades, slow down, and drive cautiously when crossing roads and side walks.
20. Never operate mower under the influence of alcohol and drugs.
21. Use care when loading or unloading the machine into a trailer or truck.
22. Use care when approaching blind corners, shrubs, trees, or other objects that may obstruct vision.
23. Always disengage blades when not in use.
24. Never listen to music with headphones/earphones while operating the mower.



**Slope Operation—Safety Precautions**

1. Do not mow on slopes greater than 15 degrees.
2. Be extremely careful when operating the mower on a slope. Reduced traction could cause sliding.
3. Do not stop or start suddenly when going uphill.
4. Slow down and use caution when making turns and when changing direction on slopes.
5. Do not operate a riding mower near steep slopes, ditches, or water. Use a walk behind mower or a hand trimmer for these areas.
6. Roll bar should be raised and locked with seat belt buckled even before engine is turned on.
7. Should it be necessary to lower the roll bar, seat belt should not be used.
8. If tires lose traction, disengage the blades and drive slowly and cautiously off the slope.
9. Use extreme care with attachments as they can change the stability of the mower and cause loss of control.
10. Slow down and drive extra carefully on hillsides. Be sure to drive in the recommended direction on hillsides. Turf conditions can affect the machine's stability.
11. The parking brake may not hold the mower if parked on a slope.

**IMPORTANT!** The mower belts are adjusted to ensure the blades stop turning within seven (7) seconds of releasing the blade control lever. If you are making any belt adjustments whatsoever, for your safety and the safety of others around you, you must ensure the belts are re-adjusted to achieve this design specification.

**GASOLINE IS HIGHLY FLAMMABLE AND EXPLOSIVE. FUEL LEAKS, A LOOSE FUEL TANK, OR A LOOSE FUEL VALVE CAN LEAD TO SEVERE INJURY OR DEATH. DO NOT OPERATE THIS MOWER IF ANY COMPONENT OF THE FUEL SYSTEM IS LOOSE OR LEAKS GASOLINE!**

**DANGER:** Do not bypass, modify, alter or disconnect the safety system. Make sure that the safety interlock system is fully operational each time before mowing.

Before attempting to use your mower, make sure you are familiar with all of the components and have read the manual.

Before setting up your Early Bird mower, disconnect the spark plug wires from the spark plugs and ground them against the engine to prevent inadvertent starting. This step should be taken as a precaution whenever you are working on this machine.

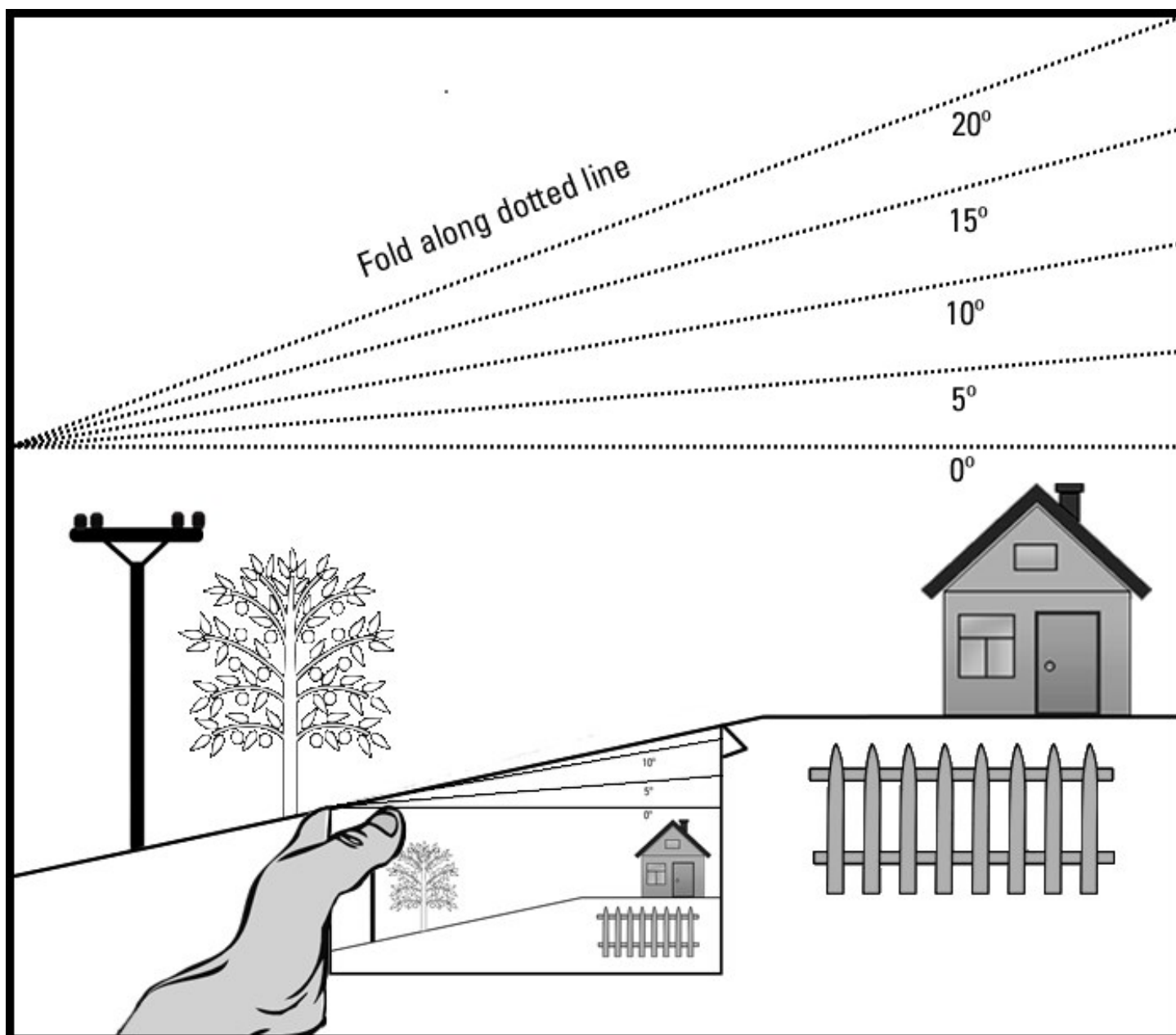
**Need Help?**

Parts, Service  
and Technical Assistance call:

**400-188-6691**

[www.jadeequipments.com](http://www.jadeequipments.com)





The maximum slope angle you can safely operate your mower on is **15 degrees**. Do not exceed 15 degrees with your mower.

1. Line up the side of this page with a vertical object to gauge the angle of the slope.
2. Fold this sheet along the dotted line and verify the slope is not in excess of 15 degrees.



**Safety Decal Identification**

The labels shown below are located on your mower to warn you of potential hazards and provide you with important safety information. If these decals become difficult to read or are missing from the mower, please contact JADE Parts & Service, LLC at 400-188-6691 or [www.jadeequipments.com](http://www.jadeequipments.com) for a replacement.



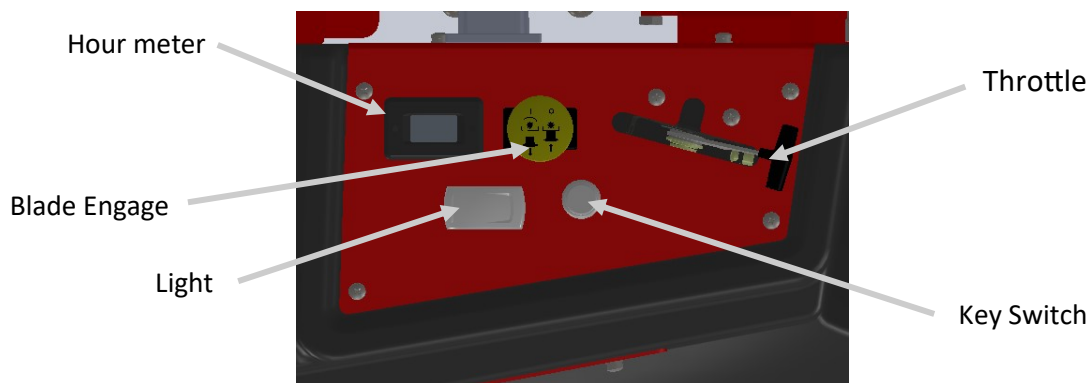
	<b>Models</b>
<b>Feature</b>	<b>JADE-ZTR72</b>
Product Type	Commercial, Zero-turn
Cutting Width	72-inch
Engine	See engine manufacturer's manual
Engine Start	Electric
Transmission Type	Dual hydrostatic
Transmission Mfg	Hydro-Gear
Mower Speeds	Infinitely variable
Deck Type	Floating, quick change
Cutting Height	1.0– 5.0 inches( ½-inch increments)
Blade Engagement	Electromagnetic Clutch
Blade Tip Speed	18,750 ft/min
Anti-Scalping Rollers	3 front/4 rear
No. Blades/ Length	3, 24.5-inch blades
Control System	Dual Control Lever
Fuel/Capacity	Gasoline/60L
Rear Drive Tires	26-inch X 14-12inch turf tread
Front Caster Tires	13*6.5-6-inch smooth tread
Brake System	Internal hydraulic and mechanical park
Weight	Approx. 650kg
Length/Width/Height	2160mm*1870mm*1900mm
LED Head Light	Standard
Cutter Belt Type	Premium B-section
Forward speed	0-12mph(19.2kph)
Reverse Speed	0-6mph(9.6kph)
Engine Speed	3600rpm
Engine Power	35hp



Throughout this manual, instructions are given on the operation of your Early Bird mower. We recommend that while going through this manual, you have your mower available for quick and easy access in order to orient yourself with the controls, maintenance and orientation of different parts. Please read through the manual before operating.

### Control Panel

Below, you will find a diagram of the control panel. Please take the time to familiarize yourself with the mower



### Lawn Mower Component Identification

(Some components may appear different than shown, depending on the model.)



## Starting the Engine

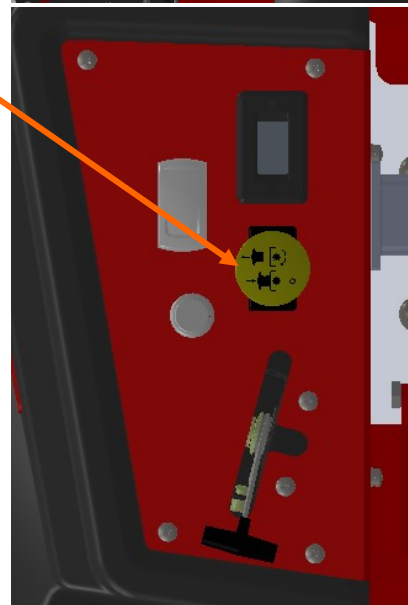
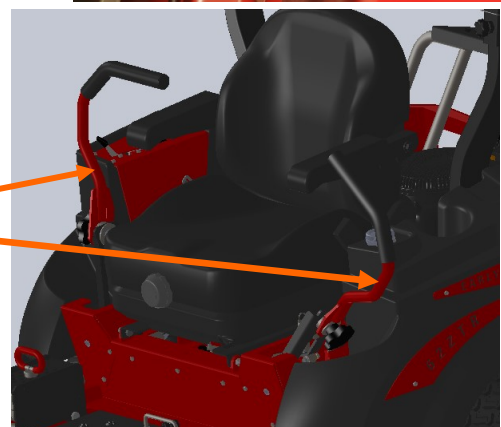
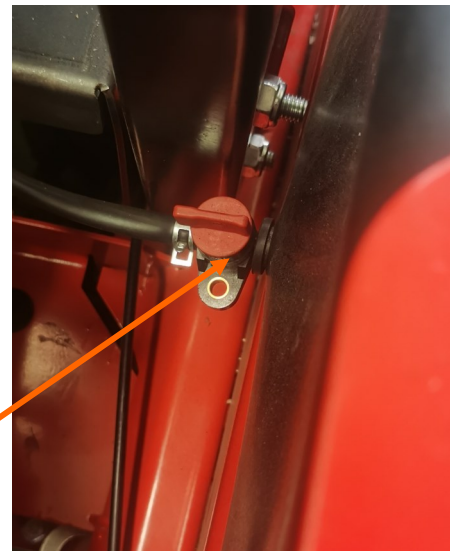


Before attempting to use your mower, make sure you are familiar with all of the components and have read the manual.

**DANGER:** Exhaust contains poisonous carbon monoxide, a colorless and odorless gas. Breathing exhaust can cause loss of consciousness and may lead to death. Do not operate the engine in a confined space where dangerous carbon monoxide fumes can collect.

**NOTE:** Be sure to add fresh unleaded gasoline and fill the engine to the proper level with manufacturers recommended motor oil before starting your mower.

1. Make sure the shut off valve, located at the bottom of the tank, is in the ON position.
2. Make sure the brake is set and the 2 control handles are spread open into their neutral position.
3. Make sure the blade engage switch lever is in the OFF position.
4. Pull CHOKE and set the throttle to its mid-point.
5. Turn the key clockwise to the START position and allow it to return to the ON position when the engine starts.
6. When the engine starts to run and the key returns to the ON position, push CHOKE off.

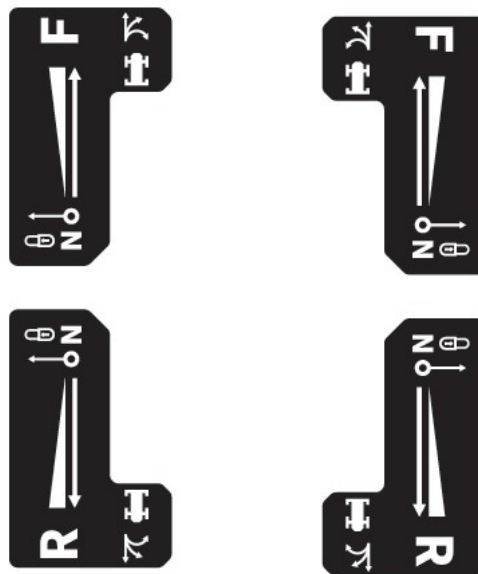






## Operating the Mower

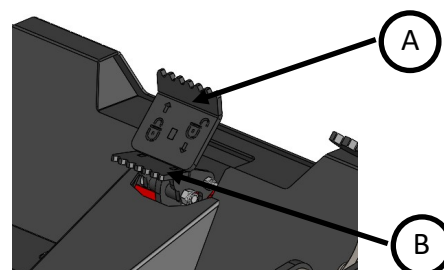
1. Make sure the brake has been moved to the OFF Position.
2. Pull both control handles to the center, at the same time the parking brake was released .
3. To drive the mower forward, push both handle bars forward away from the chest. The forward speed is directly proportional to the degree these handles are moved forward.
4. To turn the mower left, push to the right handle in front of the left handle or the left handle more towards the neutral position than the right handle.
5. To turn the mower right, perform the handle movements described in step 4 above with except with the opposite handle position.
6. To stop the forward motion of the mower, move both the handles to the center/neutral position.
7. To drive the mower backwards, pull both handle bars backwards toward the chest.
8. To turn backwards to the right or left, repeat the steps in 4 or 5 above except in the opposite direction.
9. To zero degree turn to the right, push the left handle forwards and the right handle backwards.
10. To zero degree turn to the left, push the right handle forwards and the left handle backwards.
11. When in the neutral position, the hydraulic system prevents the mower from moving easily. However, on a grade, the mower can move very slowly (with the engine off or running). Be sure to set the manual parking brake any time the mower is left unattended or is being transported.
12. When the handles are in the middle position they can be pushed away from each other to lock the mower in the neutral .



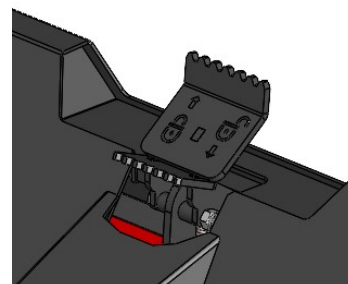
## About parking

**Note:** The device can only be started in parking state

1. Step on the parking brake pedal A, observe the return pedal B moving up and down or hear a "click" sound of the return pedal lock, which indicates that the equipment has been parked.



2. Release the parking brake. Press down on the return pedal B, the lock tongue disengages from the parking pedal A, which returns to its position, thus releasing the parking brake.



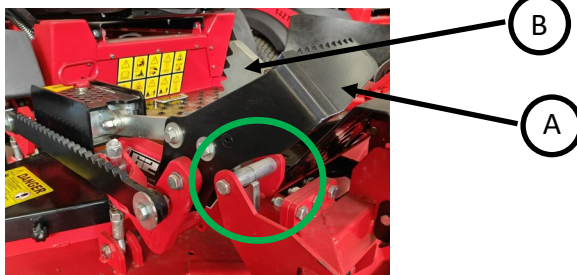
## Changing the Height of Cut

Your mower is equipped with an easily adjustable floating deck, which can be adjusted for cut heights of 1.0 inches to 5.0 inches in ½-inch increments. The deck height adjuster is located on the right side of the mower.

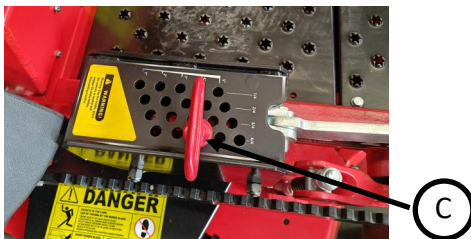
### How to Change the Cut Height

**WARNING** When adjusting the cutting height, ensure that there are no pebbles or other items under or around the blade to prevent projectiles from injuring other; do not place your feet under the blade.

1. The pedal a is pushed forward until the lock tongue B in Fig. 1 completes the locking action, which is the initial height.



2. As shown in Figure 2 (the dial has a total of 5 large positions, each of which can also be fine-tuned), select appropriate grass cutting height and insert the height adjustment pin C into the corresponding hole.



3. Step on the lock tongue b, the lock tongue disengages from the positioning , and the knife disc will drop to the corresponding selected height. Repeatedly operate 1, 2, and 3 to select different cutting heights



## Mowing



**WARNING!** Thoroughly inspect the area where you plan to use the mower. Look for items such as stones, sticks, wire, and other foreign objects. If struck by the mower, these and other objects may become projectiles that could lead to serious injury or death. Clear area of all debris.

Keep people and pets at a safe distance.

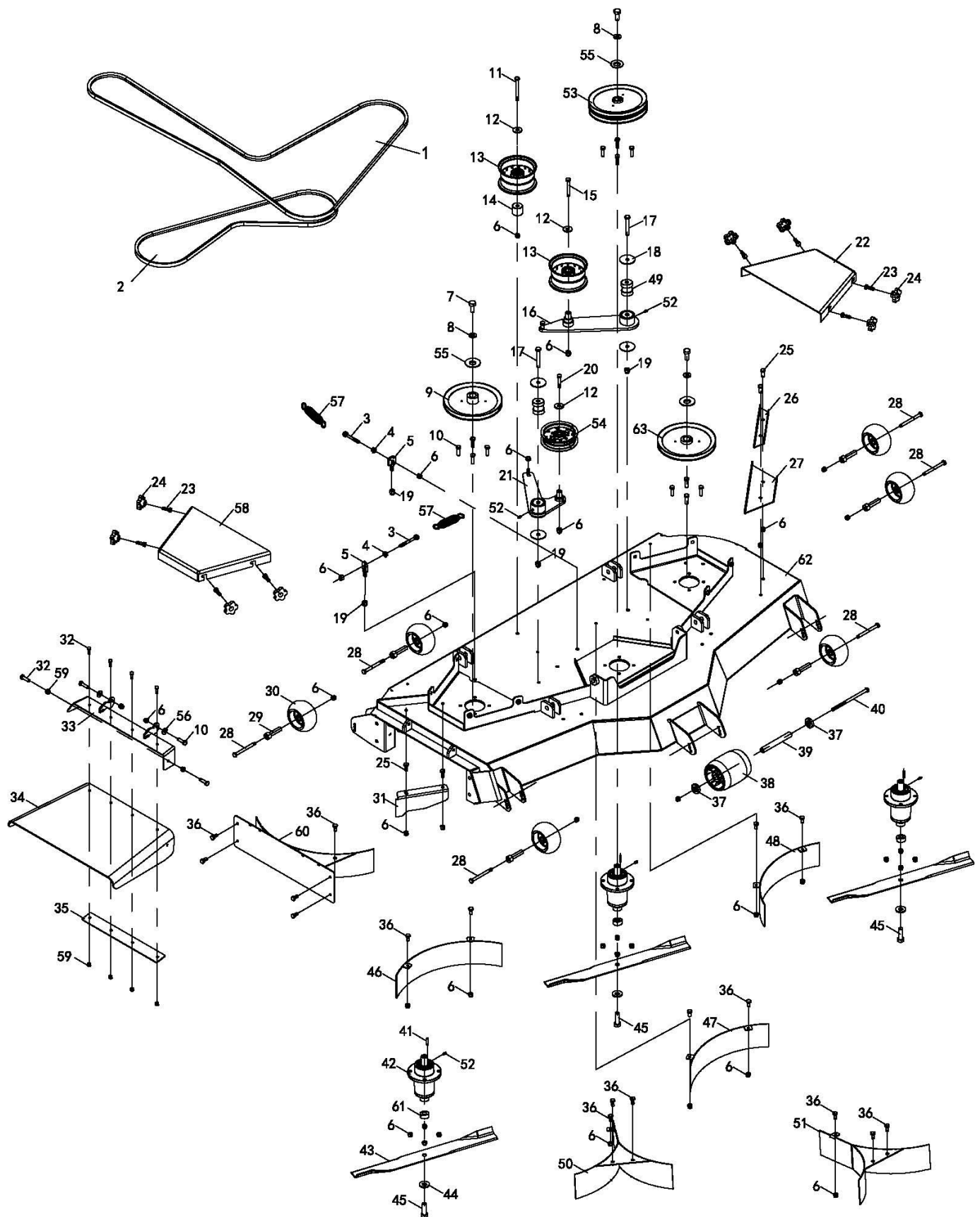


**WARNING!** Do not operate the mower with defective guards, shields, or without the safety devices securely in place.

1. When the mower is in position on the area to be mowed, move the throttle to its full speed.
2. **SLOWLY** push the blade control lever forward to the ON position.
3. Begin mowing as described on the previous page, always using safe/ comfortable speeds.
4. To stop the blades, push the blade engage switch back to the OFF position.

**IMPORTANT!** The mower belts are adjusted to ensure the blades stop turning within seven (7) seconds of releasing the blade control lever. If you are making any belt adjustments whatsoever, for your safety and the safety of others around you, you must ensure the belts are re-adjusted to achieve this design specification.



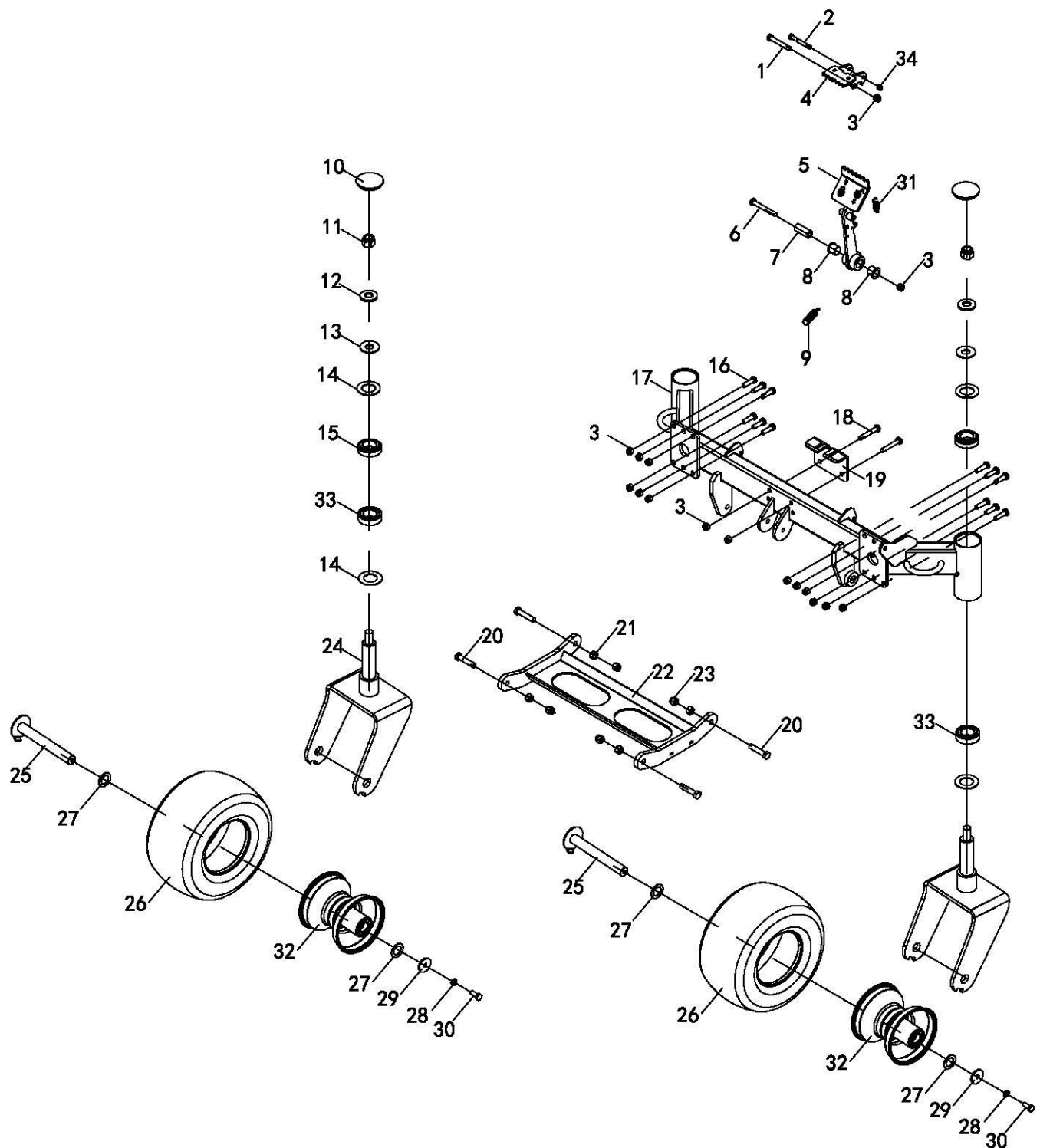




ITEM	PART NUMBER	DESCRIPTION	QTY
1	72ZTR25-023	72ZTR Deck Belt B-3850Li	1
2	72ZTR25-022	72ZTR Deck Belt B-2032Li	1
3	GB01-637	Eye Bolt M10×80	2
4	GB02-033	Hex Flange Face Nut M10	2
5	72ZTR25-066	Adjusting Tie Rod Seat Welded	2
6	GB02-035	Nylon Lock Nut M10	38
7	GB03-073	1-2-20 38in Long Inch Bolt	3
8	GB03-092	Tapered Spring Washer 12	3
9	72ZTR25-008	Right Pulley Welded	1
10	GB01-184	Hex Head Bolt M10×35	14
11	GB01-216	Hex Head Bolt M10×100	1
12	GB03-134	Tension Pulley Washer	3
13	36ZTS23-043	Wide Groove Belt Tensioner Assembly	2
14	72ZTR25-067	Idler Adjustment Sleeve	1
15	GB01-370	Hex Head Bolt M10×75	1
16	72ZTR25-016	Large Swing Arm Welding Assembly	1
17	GB01-240	Hex Head Bolt M12×80	2
18	72ZTR25-019	Tension Pulley Washer 60.5-12.3-3	4
19	GB02-060	Nylon Lock Nut M12	4
20	GB01-196	Hex Head Bolt M10×50	1
21	72ZTR25-017	Small Swing Arm Welding Assembly	1
22	72ZTR25-026	Cutter Disc Left Guard	1
23	GB01-178	Hex Head Bolt M10×30	8
24	72ZTR25-025	Plum Blossom Injection Molded Nut M10	8
25	GB01-167	Hex Head Bolt M10×25	4
26	62ZTR24-019	Footrest Upper Plate	1
27	62ZTR24-018	Footrest Lower Plate	1
28	GB01-428	Hex Head Bolt M10×110	6
29	50ZTR23-015	Pulley Inner Sleeve	6
30	34GFM21-018	5-inch Pulley	6
31	72ZTR25-027	Grass Blocking Piece	1
32	GB01-114	Hex Head Bolt M8×25	6
33	72ZTR25-015	Grass Discharge Welding Assembly	1
34	72ZTR25-020	Grass Discharge Cover	1
35	72ZTR25-021	Grass Discharge Bottom Plate	1
36	GB01-160	Hex Head Bolt M10×20	17
37	62ZTR24-151	Front Wheel Sleeve	2
38	62ZTR24-016	Nylon Wheel	1
39	62ZTR24-015	Front Pulley Axle Sleeve	1
40	GB01-610	Hex Head Bolt M10×190	1
41	GB09-067	Flat Key Type C 6.35x6.35x30	3
42	62ZTR24-012	Cutter Blade Seat Assembly	3
43	72ZTR25-006	φ626 Blade	3
44	GB03-078	Tapered Spring Washer 16	3
45	GB01-589	Inch Bolt 5/8"-18*2"	3

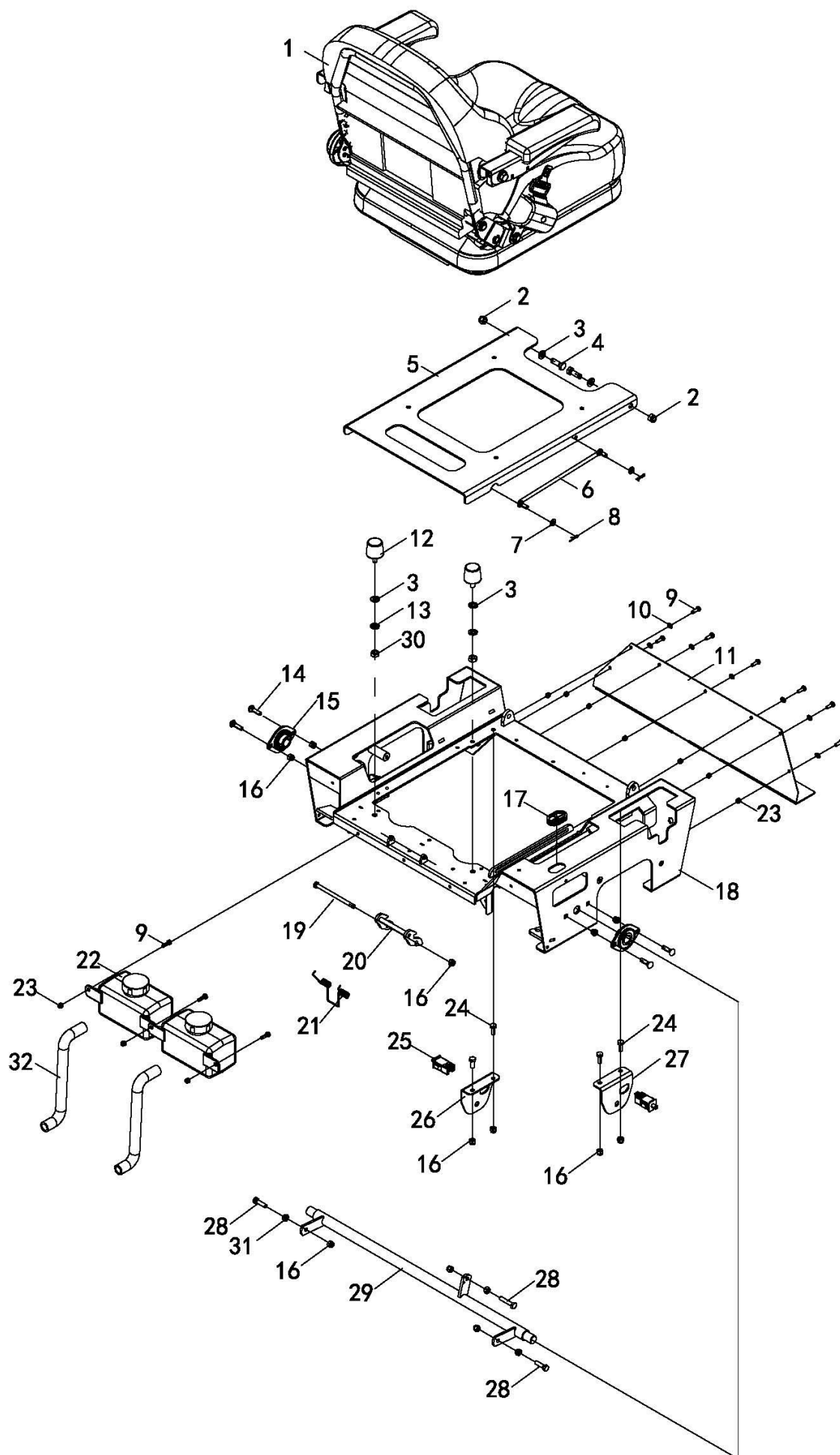


ITEM	PART NUMBER	DESCRIPTION	QTY
46	72ZTR25-011	Right Rear Grass Guard Welding Assembly	1
47	72ZTR25-012	Arc Rear Grass Guard Welding Assembly	1
48	72ZTR25-013	Left Rear Grass Guard Welding Assembly	1
49	72ZTR25-018	Tension Pulley Axle Sleeve	2
50	72ZTR25-009	Right Front Grass Guard Welding Assembly	1
51	72ZTR25-010	Left Front Grass Guard Welding Assembly	1
52	GB09-080	Grease Cup M6	5
53	72ZTR25-003	Double Pulley Welding Assembly	1
54	35ZTR22-054	Double Bearing Tension Pulley Assembly	1
55	72ZTR25-005	Cutter Disc Pulley Flat Washer	3
56	50ZTR23-009	Friction Pad	2
57	62ZTR24-207	Front Chassis Belt Tension Spring	2
58	72ZTR25-024	Cutter Disc Right Guard	1
59	GB02-024	Hexagon Nylon Insert Lock Nut M8	6
60	72ZTR25-014	Side Baffle Welding Assembly	1
61	72ZTR25-004	Cutter Disc Adjustment Sleeve	3
62	72ZTR25-001	Cutter Disc Welding Assembly	1
63	72ZTR25-007	Left Pulley Welding Assembly	1





ITEM	PART NUMBER	DESCRIPTION	QTY
1	GB01-283	Hex Head Bolt M10×70	1
2	62ZTR25-230	Parking Hook Spring Bolt	1
3	GB02-035	Nylon Lock Nut M10	16
4	62ZTR24-183	Parking Return Pedal	1
5	62ZTR24-182	Parking Footrest Welding Assembly	1
6	GB01-211	Hex Head Bolt M10×80	1
7	62ZTR24-184	Parking Footrest Inner Sleeve	1
8	62ZTR24-075	Sliding Bearing 2023-29-21	2
9	62ZTR24-212	Parking Pedal Return Spring	1
10	62ZTR24-033	Front Axle Cover	2
11	GB02-062	Hexagon Nylon Insert Lock Nut M20	2
12	GB03-079	Tapered Spring Washer 20	2
13	62ZTR24-035	Front Wheel Top Washer	2
14	62ZTR24-034	Front Wheel Washer	4
15	GB04-116	Tapered Roller Bearing 32007	2
16	GB01-184	Hex Head Bolt M10×35	12
17	72ZTR25-028	Front Crossbeam Welding Assembly	1
18	GB01-202	Hex Head Bolt M10×60	2
19	54ZTR25-028	Parking Block	1
20	GB01-233	Hex Head Bolt M12×55	4
21	GB02-043	Hexagon Nut M12	4
22	72ZTR25-049	Connecting Plate Welding Assembly	1
23	GB02-060	Hexagon Nylon Insert Lock Nut M12	4
24	72ZTR25-029	Front Wheel U-shaped Welding Assembly	2
25	62ZTR24-029	Front Wheel Axle Welding Assembly	2
26	62ZTR24-196	Non-pneumatic Front Tire 13X6.5-6	2
27	GB03-129	Axle Washer	4
28	GB03-025	Spring Washer 10	2
29	GB03-148	Axle Washer	2
30	GB01-167	Hex Head Bolt M10×25	2
31	62ZTR24-194	Front Parking Spring	1
32	62ZTR24-195	Front Wheel Rim Assembly	2
33	GB04-117	Tapered Roller Bearing 33007	2
34	GB02-024	Nylon Lock Nut M8	1





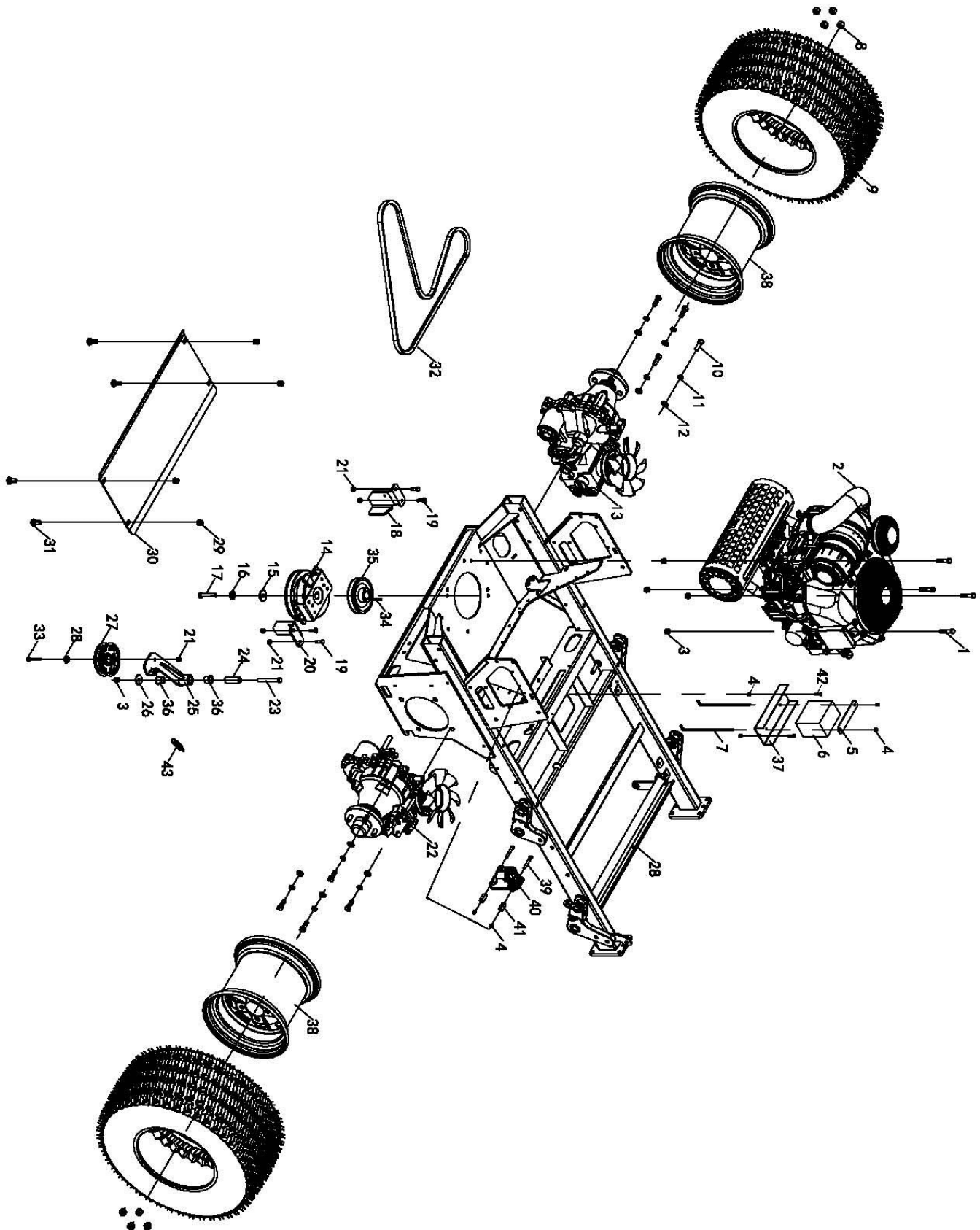
ITEM	PART NUMBER	DESCRIPTION	QTY
1	62ZTR24-049	Commercial Seat	1
2	GB02-035	Nylon Lock Nut M10	2
3	GB03-043	Flat Washer 10	4
4	GB01-178	Hex Head Bolt M10×30	2
5	72ZTR25-032	Seat Base	1
6	62ZTR24-161	Seat Tie Rod Welding Assembly	1
7	GB03-039	Flat Washer 8	2
8	GB09-302	Quick-Change Pin 1.6*27.7	2
9	GB01-049	Hex Head Bolt M6×20	10
10	GB03-034	Flat Washer 6	7
11	72ZTR25-037	Front Panel Welding Assembly	1
12	62ZTR24-070	Seat Rubber Damper	2
13	GB03-006	Spring Washer 10	2
14	GB01-372	Round Head Square Neck Bolt M8×30	4
15	62ZTR24-162	Bearig (SB204 Bearing)	2
16	GB02-024	Nylon Lock Nut M8	12
17	62ZTR24-198	Oval Wire Grommet	1
18	72ZTR25-031	Seat Bracket Welding Assembly	1
19	GB01-567	Hex Head Bolt M8×120	1
20	62ZTR24-051	Seat Locking Welding Assembly	1
21	62ZTR24-156	Seat Torsion Spring	1
22	HGT5400-001	ZT-5400 Oil Pot	2
23	GB02-011	Nylon Lock Nut M6	10
24	GB01-101	Hex Head Bolt M8×20	4
25	35ZTR22-003	Parking Switch (4-Pin NC)	2
26	62ZTR24-052	Control Switch Fixing Plate	1
27	62ZTR24-068	Switch Fixing Part Right	1
28	GB01-116	Hex Head Bolt M8×30	3
29	72ZTR25-033	Parking Swing Arm Welding Assembly	1
30	GB02-036	Hexagon Nut M10	2
31	GB02-022	Hexagon Nut M8	3
32	72ZTR25-061	Hydraulic Pump Oil Pipe	2





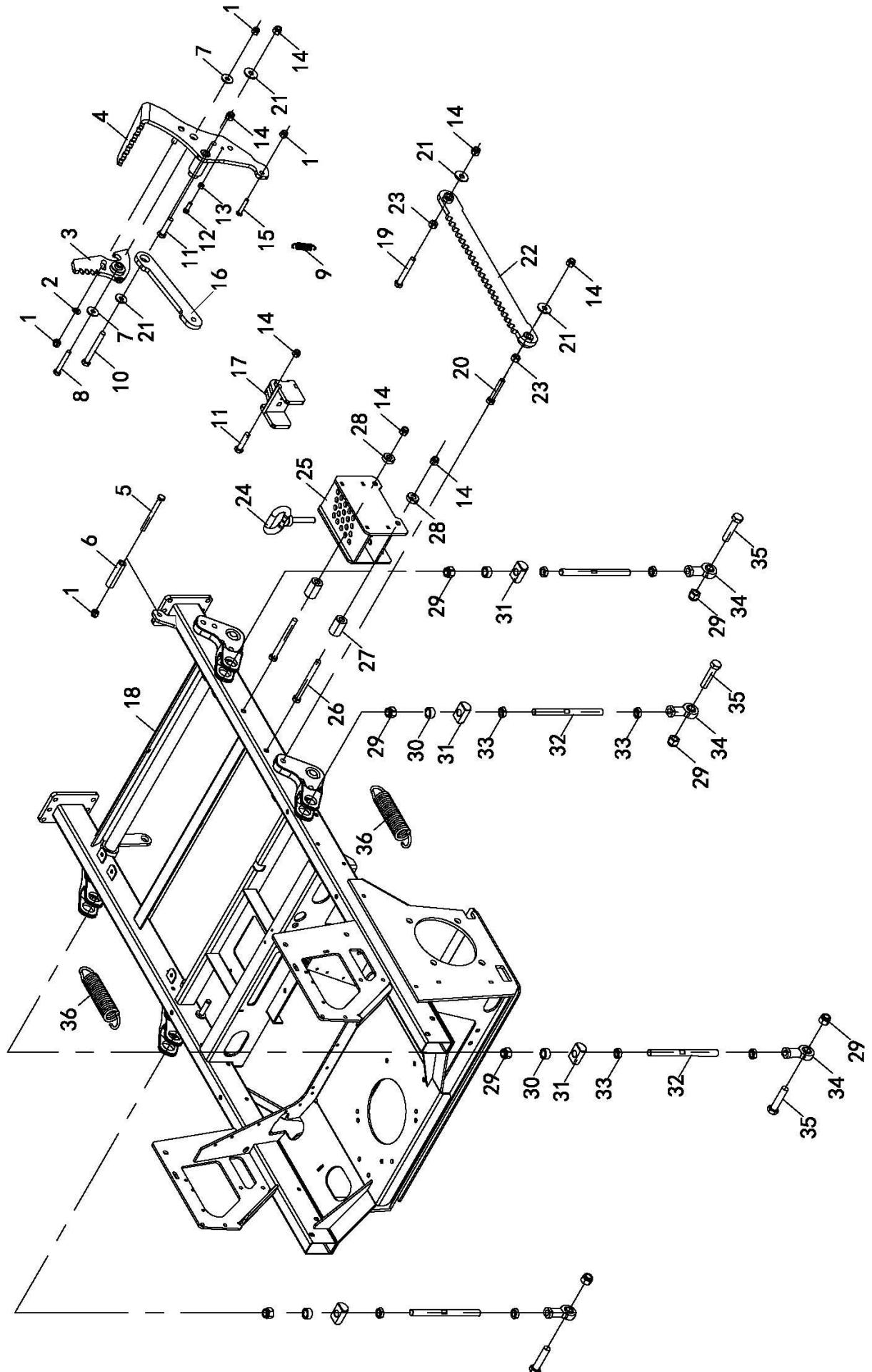


ITEM	PART NUMBER	DESCRIPTION	QTY
1	62ZTR24-062	Handle Cover	2
2	72ZTR25-034	Handle Welding Assembly	2
3	62ZTR24-061	Handle Injection Molded Nut	2
4	62ZTR24-064	Armrest Washer	4
5	62ZTR24-104	Armrest Locking Disc	4
6	62ZTR24-059	Operating Handle Connection Welding Assembly	1
7	GB01-395	Round Head Square Neck Bolt M12×50	2
8	GB01-189	Round Head Square Neck Bolt M10×45	4
9	62ZTR24-056	Handle Bolt Sleeve	4
10	GB02-036	Hexagon Nut M10	8
11	GB02-035	Nylon Lock Nut M10	12
12	62ZTR24-055	Armrest Tension Spring	2
13	GB01-591	Hex Head Bolt M12×170	2
14	62ZTR24-058	Swing Arm Fixed Bracket Welding Assembly	1
15	62ZTR24-066	Right Swing Arm Fixed Bracket Welding Assembly	1
16	GB02-024	Hexagon Nylon Insert Thin Lock Nut M8	6
17	62ZTR24-054	Swing Arm Bronze Bushing	4
18	GB01-116	Hex Head Bolt M8×30	2
19	62ZTR24-057	Sliding Bearing 1820-21	4
20	GB02-102	Hex Flange Face Serrated Nut M8	4
21	62ZTR24-067	Operating Swing Arm Rotating Sleeve	2
22	GB01-598	Hex Flange Bolt (Oversized Series) M8×35	4
23	GB01-131	Hex Head Bolt M8×40	2
24	72ZTR25-031	Seat Bracket Welding Assembly	1
25	62ZTR24-065	Right Handle Fixing Welding Assembly	1
26	62ZTR24-052	Control Switch Fixing Plate	1
27	62ZTR24-068	Right Switch Fixing Part	1
28	GB02-060	Nylon Lock Nut M12	2
29	35ZTR22-164	Bidirectional Damper	2
30	GB01-186	Hex Head Bolt M10×40	2
31	GB03-043	Flat Washer 10	2
32	35ZTR22-173	Spherical Plain Bearing with Internal Thread M10	4
33	62ZTR24-046	Drive Tie Rod	2
34	GB01-202	Hex Head Bolt M10×60	2
35	62ZTR24-181	Drive Swing Arm Sleeve	2
36	62ZTR24-043	Drive Swing Arm Welding Assembly	2
37	GB09-157	Circlip 9	2
38	36ZTS23-080	Small Sleeve	4
39	GB04-080	Deep Groove Ball Bearing 61801	4
40	GB01-196	Hex Head Bolt M10×50	2
41	GB01-184	Hex Head Bolt M10×35	2
42	GB02-030	Hexagon Nut M10, Left-Hand Thread	4
43	72ZTR25-030	Drive Tie Rod 2	2
44	35ZTR22-165	Spherical Plain Bearing with Internal Thread M10, Left-Hand Thread	4
45	72ZTR25-055	Control Swing Arm Sleeve	2
46	62ZTR25-063	Handle Grip (Upgraded)	2





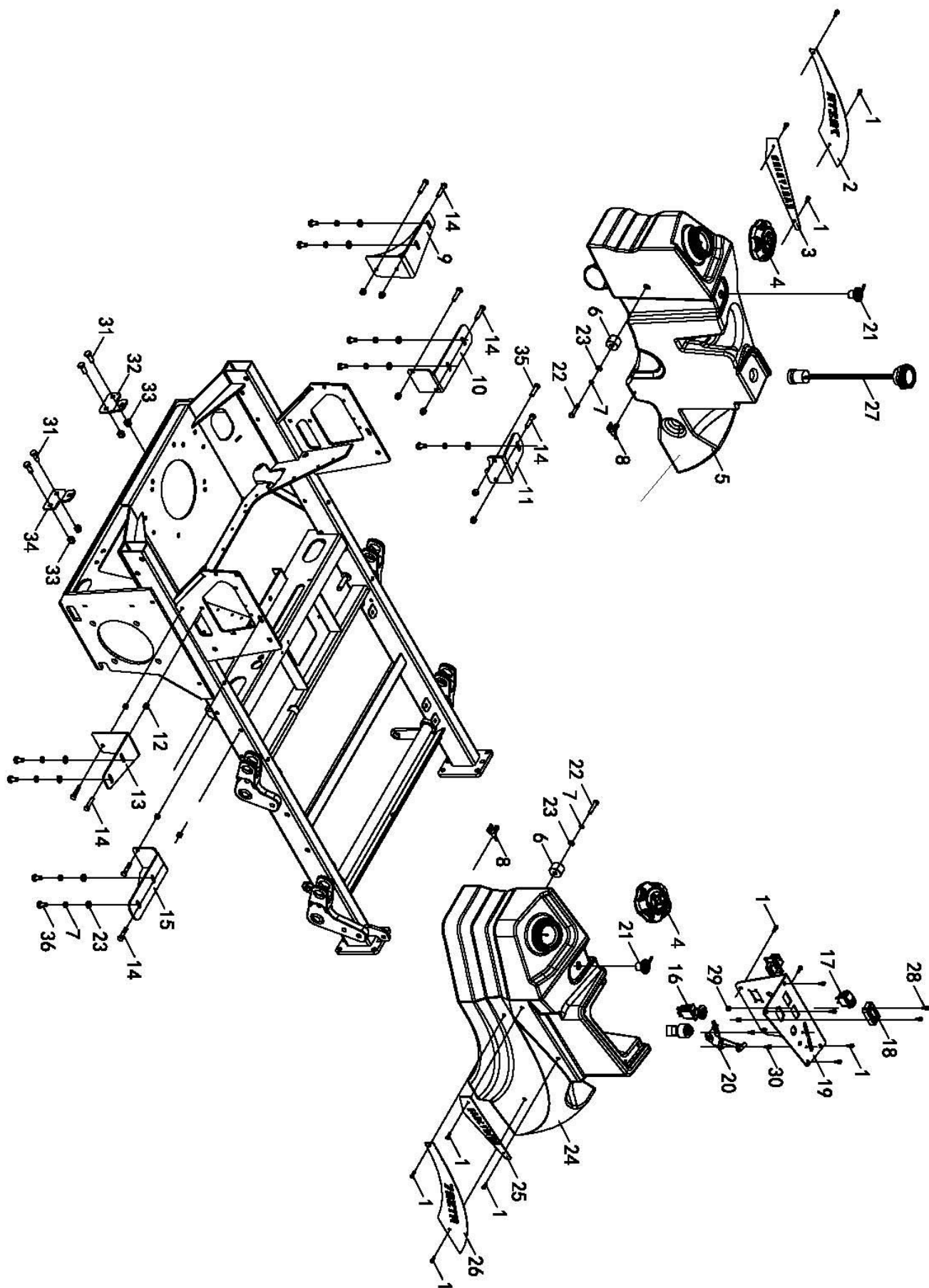
ITEM	PART NUMBER	DESCRIPTION	QTY
1	GB01-196	Hex Head Bolt M10×50	4
2	62ZTR24-193	Zongshen Engine XP1000 (with Muffler)	1
3	GB02-035	Nylon Lock Nut M10	5
4	GB02-011	Nylon Lock Nut M6	6
5	62ZTR25-239	Battery Pressure Plate	1
6	62ZTR25-237	Starting Lithium Battery	1
7	62ZTR25-232	Battery Tie Rod	2
8	34GFM21-163	Hub Tapered Nut 1/2"-20	8
9	72ZTR25-070	26x14-12 Rear Wheel Tire	2
10	GB01-633	Inch Full Thread Bolt 1/2"-13* 1 1/2"	8
11	GB03-073	Inch Spring Washer 1/2	8
12	GB03-049	Flat Washer 12	8
13	HG5400-001	5400 Hydraulic Pump Left	1
14	62ZTR24-047	GT2.75 Clutch	1
15	GB03-155	Clutch Shaft End Washer	1
16	GB03-092	Tapered Spring Washer 12	1
17	GB01-599	Inch Hex Bolt 7/16-20UNF*2.2"	1
18	62ZTR24-148	Left Clutch Support Plate	1
19	GB01-114	Hex Head Bolt M8×25	4
20	62ZTR24-149	Right Clutch Support Plate	1
21	GB02-024	Hexagon Nylon Insert Lock Nut M8	5
22	HG5400-002	5400 Hydraulic Pump Right	1
23	GB01-214	Hex Head Bolt M10×90	1
24	62ZTR24-135	Rear Chassis Tension Pulley Inner Sleeve	1
25	62ZTR24-134	Tension Pulley Bracket Welding Assembly	1
26	72ZTR25-057	Drive Swing Arm Washer	1
27	35ZTR22-053	Rear Chassis Belt Pressure Wheel	1
28	35ZTR22-059	Upper Pressure Sleeve 1	1
29	GB02-060	Hexagon Nylon Insert Lock Nut M12	4
30	72ZTR25-056	Bottom Protection Plate	1
31	GB01-220	Round Head Square Neck Bolt M12×30	4
32	72ZTR25-022	Drive Belt B-2055	1
33	GB01-139	Hex Bolt M8×50	1
34	GB09-288	Flat Key 6.35×6.35×20	1
35	72ZTR25-054	Engine Drive Wheel	1
36	62ZTR24-075	Sliding Bearing	2
37	62ZTR25-238	Battery Mounting Plate	1
38	72ZTR25-071	Rear Wheel Rim (Metallic Silver)	2
39	GB01-590	Hex Head Bolt M6×60	2
40	62ZTR24-186	Gasoline Pump	1
41	62ZTR24-187	Gasoline Pump Support Sleeve	2
42	GB01-049	Hex Head Bolt M6×20	2
43	62ZTR24-210	Travel Tension Spring	1







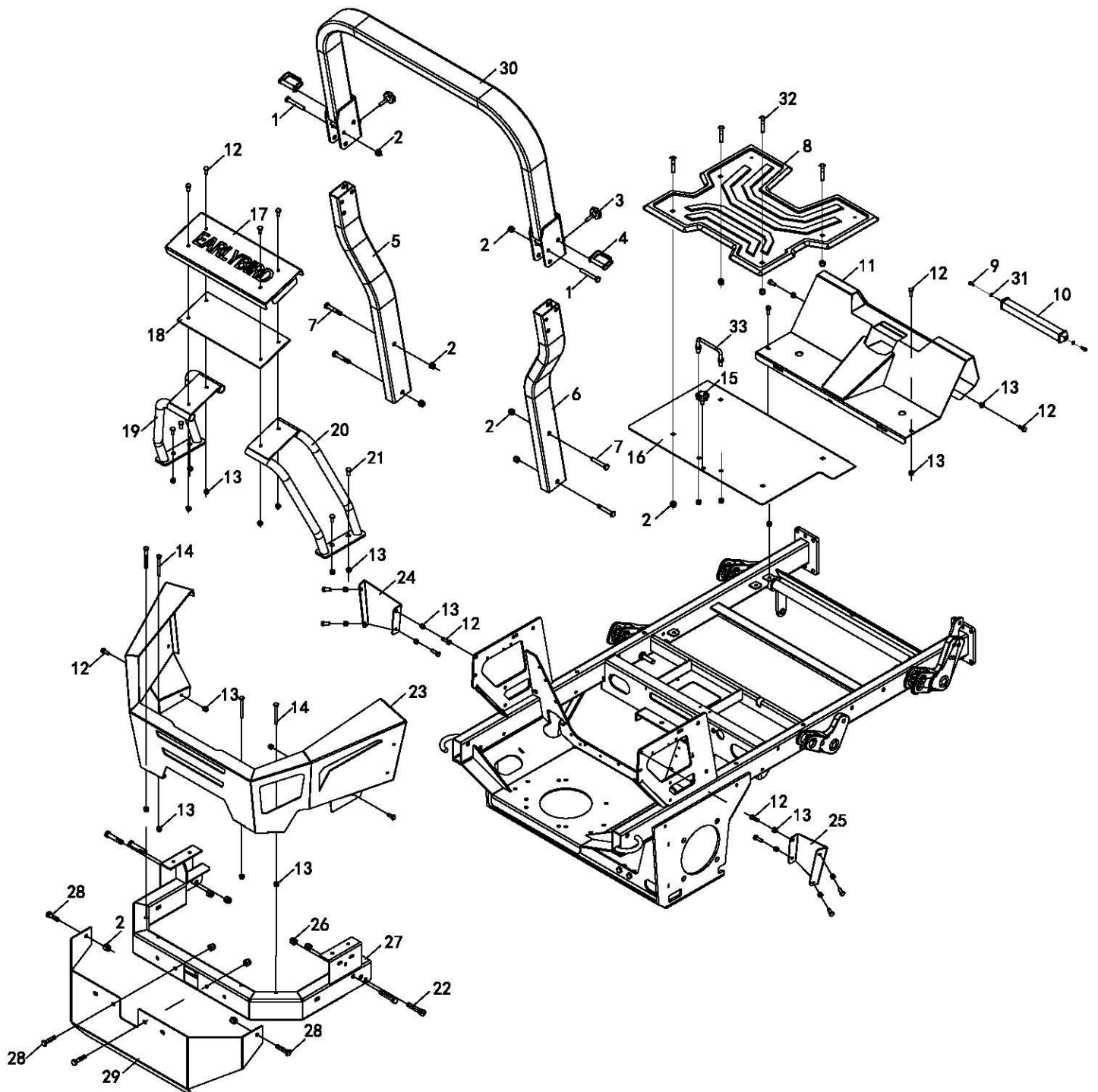
ITEM	PART NUMBER	DESCRIPTION	QTY
1	GB02-035	Nylon Lock Nut M10	4
2	GB03-043	Flat Washer 10	1
3	62ZTR24-081	Pawl Welding Assembly	1
4	62ZTR24-080	Height Footrest Welding Assembly	1
5	GB01-214	Hex Head Bolt M10×90	1
6	62ZTR24-087	Height Adjustment Sleeve	1
7	GB03-135	Washer 30*10.5*3	2
8	GB01-283	Hex Head Bolt M10×70	1
9	62ZTR24-084	Pawl Spring	1
10	GB01-379	Hex Head Bolt M12×100	1
11	GB01-441	Hex Head Bolt M12×50	3
12	GB01-114	Hex Head Bolt M8×25	1
13	GB02-022	Hexagon Nut M8	1
14	GB02-060	Nylon Lock Nut M12	7
15	GB01-192	Hex Head Bolt M10×45	1
16	62ZTR24-088	Connecting Plate Footrest	1
17	62ZTR24-086	Sliding Block Welding Assembly	1
18	72ZTR25-002	72ZTR Frame Welding Assembly	1
19	GB01-594	Hex Head Bolt M12×85	1
20	GB01-596	Hex Head Bolt M12×70	1
21	GB03-049	Washer 35×12.5×3	4
22	62ZTR24-044	Front and Rear Outer Swing Arm Connector	1
23	GB02-043	Hexagon Nut M12	2
24	62ZTR24-090	Height Adjustment Pin Welding Assembly	1
25	62ZTR24-037	Index Plate Welding Assembly	1
26	GB01-408	Hex Head Bolt M12×130	2
27	62ZTR24-180	Height Adjustment Inner Sleeve	2
28	62ZTR24-039	Height Adjustment Sleeve	2
29	GB02-061	Nylon Lock Nut M16	8
30	62ZTR24-040	Height Adjustment Small Sleeve	4
31	62ZTR24-038	Height Adjustment Lock Pin	4
32	72ZTR25-053	Lifting Eye Tie Rod	4
33	GB02-063	Hexagon Thin Nut M16	8
34	GB04-118	Rod End Spherical Plain Bearing Type C SIBJK16C	4
35	GB01-592	Hex Head Bolt M16×70	4
36	72ZTR25-058	Tension Spring	2







ITEM	PART NUMBER	DESCRIPTION	QTY
1	GB01-477	Cross Recessed Pan Head Screw with Spring Washer and Flat Washer Assembly M5×16	14
2	72ZTR25-045	Fuel Tank Decorative Plate	1
3	62ZTR24-125	Upper Fuel Tank Decorative Plate	1
4	62ZTR24-211	Fuel Tank Cap	2
5	62ZTR24-103	Left Fuel Tank	1
6	62ZTR24-178	Fuel Tank Sleeve	2
7	GB03-005	Spring Washer 8	11
8	35STM23-332	Fuel Tank Switch	2
9	62ZTR24-123	Left Rear Fuel Tank Bracket Welding Assembly	1
10	62ZTR24-121	Left Middle Fuel Tank Bracket Welding Assembly	1
11	72ZTR25-065	Left Front Fuel Tank Support	1
12	GB02-024	Nylon Lock Nut M8	10
13	62ZTR24-131	Right Rear Fuel Tank Bracket Welding Assembly	1
14	GB01-143	Hex Head Bolt M8×60	9
15	62ZTR24-132	Right Middle Fuel Tank Bracket Welding Assembly	1
16	35STM22-312	Blade Electromagnetic Clutch Switch	1
17	35STM22-170	Light Switch	1
18	35ZTR22-038	Hour Meter	1
19	62ZTR25-128	Control Panel	1
20	62ZTR25-240	Throttle Cable Assembly	1
21	62ZTR24-202	Exhaust Valve (with Sealing Plug)	2
22	GB01-131	Full Thread Hex Head Bolt M8×40	2
23	GB03-039	Flat Washer 8	11
24	62ZTR24-102	Right Fuel Tank	1
25	62ZTR24-127	Right Upper Fuel Tank Decorative Plate	1
26	72ZTR25-046	Right Decorative Plate	1
27	62ZTR24-143	Mechanical Fuel Gauge	1
28	GB01-008	Cross Recessed Pan Head Screw M3×12	2
29	GB02-001	Nylon Lock Nut M3	2
30	GB01-640	Cross Recessed Pan Head Screw with Spring Washer and Flat Washer Assembly M4×12	2
31	GB01-167	Hex Head Bolt M10×25	4
32	72ZTR25-064	Left Parking Cable Fixing Plate	1
33	GB02-035	Nylon Lock Nut M10	4
34	72ZTR25-059	Right Parking Cable Fixing Plate	1
35	GB01-341	Hex Head Bolt M8×55	1
36	GB01-101	Hex Head Bolt M8×20	9





ITEM	PART NUMBER	DESCRIPTION	QTY
1	GB01-283	Hex Head Bolt M10×70	2
2	GB02-035	Nylon Lock Nut M10	10
3	62ZTR24-144	M8 Plum Blossom Bolt	2
4	62ZTR24-145	Bumper Pin	2
5	62ZTR24-138	Left Lower Bumper Welding Assembly	1
6	62ZTR24-140	Right Lower Bumper Welding Assembly	1
7	GB01-202	Hex Head Bolt M10×60	4
8	72ZTR25-068	72ZTR Universal Non-Slip Rubber Pad	1
9	GB01-015	Socket Flat Head Screw M5×12	2
10	35STM22-210	Single-Row Long Strip LED Light	1
11	72ZTR25-051	Front Light Bracket Welding Assembly	1
12	GB01-101	Hex Head Bolt M8×20	18
13	GB02-024	Nylon Lock Nut M8	26
14	GB01-648	Hex Head Bolt M8×100	4
15	62ZTR24-176	Pedal M8 Plum Blossom Bolt	1
16	72ZTR25-052	Rear Pedal Welding Assembly	1
17	72ZTR25-043	Air Filter Guard Logo	1
18	72ZTR25-044	Air Filter Protection Pad	1
19	72ZTR25-041	Left Air Filter Guard Welding Assembly	1
20	72ZTR25-042	Right Air Filter Guard Welding Assembly	1
21	GB01-114	Hex Head Bolt M8×25	4
22	GB01-593	Hex Head Bolt M12×60	4
23	72ZTR25-040	Rear Guard	1
24	72ZTR25-048	Left Bumper Connecting Plate	1
25	72ZTR25-047	Right Bumper Connecting Plate	1
26	GB02-060	Hexagon Nylon Insert Lock Nut M12	4
27	72ZTR25-038	Bumper Welding Assembly	1
28	GB01-430	Hex Head Bolt M10×65	4
29	72ZTR25-039	Muffler Guard Plate	1
30	72ZTR25-050	Upper Bumper Welding Assembly	1
31	GB03-031	Flat Washer 5	2
32	GB01-649	Round Head Square Neck Bolt M10×20	4
33	62ZTR24-175	Stainless Steel Folding Handle M10	1



### The Importance of Maintenance

Regular maintenance is essential to ensure your mower continues to deliver safe and high-quality performance.

To help you properly care for your mower, the following pages include a recommended maintenance schedule, routine inspection procedures, and simple maintenance procedures using basic hand tools. Maintenance is the responsibility of the owner and must be performed regularly. More difficult service tasks or tasks that require special tools are best handled by a recommended service technician or other qualified mechanic.

The maintenance schedule described on page 20 applies to mowers used under normal operating conditions. If you operate your mower under severe conditions, such as sustained prolonged use or high-temperature operations, or use it in unusually wet, dusty or rocky conditions, consult your servicing dealer for recommendations applicable to your individual needs and use.

Be sure to use genuine Early Bird mower replacement parts when servicing your mower to assure the best quality, safety and performance.

**Need Help? Parts, Service and Technical Assistance**  
Call: 400-188-6691 [www.jadeequipments.com](http://www.jadeequipments.com).

### Fuel



**DANGER: Gasoline is highly flammable and explosive. Do not add fuel while the engine is running or is hot. Keep open flames, sparks, and heat away from the fuel and store fuel in containers specifically designed for that purpose. Add fuel outdoors only and if the fuel is spilled, do not start the engine. Manually push the mower away from the spill and wipe up immediately.**

Refer to the Engine Owner's Manual for the type of fuel to use.

A fuel shut off valve is located on the bottom of the fuel tank. It is recommended that the fuel be shut off when transporting between job sites and when storing the mower for extended periods of time.



### CAUTION

**CAUTION!** Before making any adjustments and/or servicing to your Early Bird mower, make sure the mower is on a level surface, with the ignition switch off, the key removed, the brake set, and the blades disengaged. Also, disconnect the spark plug wires from the spark plugs and ground them against the engine to prevent inadvertent starting.

If you are performing adjustments or maintenance after operating the mower, allow the unit to cool and always wear protective clothing.

### Tire Pressure

Incorrect tire pressure may cause the mower to pull to one side and/or result in uneven cut. Use caution when filling the tires. NEVER exceed the recommended maximum tire pressure as stated on the tires.

### Air Filter

**Refer to the Engine Owner's Manual for the recommended maintenance.**

### Engine Oil

CHECK ENGINE OIL BEFORE EACH USE. Refer to the Engine Owner's Manual for the type of oil to use, oil change intervals, and the proper procedures to check and change oil.

### Blades

Inspect blades on a daily basis for nicks, bends, and excessive wear. If the blades are worn, cracked, bent, or damaged, replace them before using the mower. Choose genuine Early Bird mower replacement blades to ensure quality and performance.

When sharpening the blades, sharpen only the cutting edges and try to maintain the original angle of the blade. Do not make the cutting edge razor sharp. Remove the same amount from each side of the blade so that balance is maintained.



### CAUTION

**CAUTION: Always wear work gloves when performing blade maintenance and beware of the cutting edges. Be sure the engine is off, the key removed, and the spark plug wires are disconnected from the spark plugs to prevent inadvertent starting.**



Item	Procedure	Time Interval				
		Break-in (first 5 hrs)	Every 8 hrs (daily)	Every 40 hrs (weekly)	Every 100 hrs (Bi-weekly)	Every 200 hrs (monthly)
Belts	Inspect (adjust if needed)	X	X			
Blades	Inspect and/or Sharpen		X			
Engine Air Filter	Inspect (see Engine Owner's Manual)		X			
Engine Cooling Areas	Clean (see Engine Owner's Manual)		X			
Engine Oil	Check (see Engine Owner's Manual)	X	X			
	Change (see Engine Owner's Manual)					
Engine Oil Filter	Change (see Engine Owner's Manual)					
Engine Spark Plug	Inspect (see Engine Owner's Manual)				X	
Fuel Filter	Replace				X	
Fuel Line	Check				X	
Hardware	Check for proper tightness	X		X		
Mower Main Frame	Remove debris from under belt cover		X			
Safety Interlock System	Check Operations and Switches		X			
Tires	Check Air Pressure			X		
Spindle/Blade Brakes			X			

### Cleaning the Mower

It is recommended that the Early Bird lawn mower be cleaned on a daily basis. Excessive accumulation of dirt, debris, oil, etc. on cutting units, drives, mufflers, and engine may present a potential safety hazard.

**Short Term Storage**

- Let engine cool before storing and do not store near flame, high heat, and possible ignitions from sparks.
  - Always clean off all flammable material as well as grime and dirt before storage.
  - Never use a pressure washer and avoid drenching the control panel, motor, engine, and hydro pumps with water.
  - Wash with mild detergent and water only.
  - After washing the machine engage the engine at high and let the mower run for 5 minutes.
  - Shut off fuel for storing or transporting.
  - Carefully release pressure from components with stored energy.
  - Store mower only on the ground.
  - Do not drain fuel indoors or near a flame.
  - Use jack stands to support components when required.
  - Always park machine on level ground and set the parking brake when storing.
  - Store the machine in a clean and dry environment.
  - Always remove the key from the ignition.
  - Add a petroleum based conditioner in the gas tank and run for 5 minutes to distribute through mower.
- 

**Extended Storage**

- Change air filter.
- Make sure all fuel is drained before storing.
- To ensure all fuel is drained from the mower, run the mower until it runs out of gas before storage.
- Check the spark plugs condition and pour two tablespoons of engine oil in the spark plug holes and leave the spark plugs off.
- Cover the machine when in storage.
- Remove Battery and clean terminals and cable connectors. Store battery in a cool dry place.
- Everything mentioned in short term storage should also be applied to extended storage.



<b>Problem</b>	<b>Possible Causes</b>	<b>Solution</b>
Engine will not start	<ol style="list-style-type: none"> <li>1. Key in the OFF position</li> <li>2. Insufficient fuel in the tank</li> <li>3. Air bubble in the fuel line</li> <li>4. Fuel valve in OFF position</li> <li>5. Choke not ON</li> <li>6. Choke linkage out of adjustment</li> <li>7. Low engine oil</li> <li>8. Blade control in ON position</li> <li>9. Loose spark plug wire</li> <li>10. Fouled spark plug</li> <li>11. Plugged or dirty air filter</li> <li>12. Bad gasoline</li> <li>13. Plugged or dirty fuel filter</li> <li>14. Safety switches out of alignment or loose</li> <li>15. Dead battery (electric start models)</li> </ol>	<ol style="list-style-type: none"> <li>1. Turn key to ON position</li> <li>2. Add gasoline</li> <li>3. Prime engine or shake bubble out</li> <li>4. Turn valve ON</li> <li>5. Turn choke ON</li> <li>6. Refer to Engine Owner's Manual</li> <li>7. Add engine oil</li> <li>8. Push lever to OFF position</li> <li>9. Tighten wire or connections</li> <li>10. Clean or replace the plug</li> <li>11. Clean or replace the air filter</li> <li>12. Drain and replace with fresh gasoline</li> <li>13. Replace the fuel filter</li> <li>14. Adjust or tighten switches - read warnings!</li> <li>15. Recharge or replace battery</li> </ol>
Engine will not keep running/quits	<ol style="list-style-type: none"> <li>1. Water in the fuel</li> <li>2. Loose safety switch</li> <li>3. Fuel valve is OFF</li> <li>4. Dirty fuel filter</li> <li>5. Dirty air filter</li> <li>6. Low engine oil</li> </ol>	<ol style="list-style-type: none"> <li>1. Drain and replace with fresh fuel</li> <li>2. Adjust switch</li> <li>3. Turn fuel valve ON</li> <li>4. Replace fuel filter</li> <li>5. Clean or replace air filter</li> <li>6. Add engine oil</li> </ol>
Engine stops when blades are engaged	<ol style="list-style-type: none"> <li>1. Loose safety switch</li> <li>2. Belt tension too high</li> <li>3. Blades jammed with foreign material</li> </ol>	<ol style="list-style-type: none"> <li>1. Adjust switch</li> <li>2. Adjust belt</li> <li>3. Remove foreign material</li> </ol>
Blades do not turn	<ol style="list-style-type: none"> <li>1. Broken belt</li> <li>2. Blade activation linkage out of adjustment.</li> </ol>	<ol style="list-style-type: none"> <li>1. Replace belt</li> <li>2. Adjust linkage</li> </ol>
Belts squeal when blades are engaged	<ol style="list-style-type: none"> <li>1. Excessive belt wear</li> </ol>	<ol style="list-style-type: none"> <li>1. Replace belt</li> </ol>
Belts slip when blades are engaged	<ol style="list-style-type: none"> <li>1. Excessive belt wear</li> </ol>	<ol style="list-style-type: none"> <li>1. Replace belt</li> </ol>





<b>Problem</b>	<b>Possible Causes</b>	<b>Solution</b>
Mower will not move forward or reverse	<ol style="list-style-type: none"> <li>1. Brake ON</li> <li>2. Bypass levers pulled out</li> </ol>	<ol style="list-style-type: none"> <li>1. Release brake on control panel</li> <li>2. Ensure bypass pins are retracted</li> </ol>
Cannot move mower when the engine is off	<ol style="list-style-type: none"> <li>1. Bypass not engaged</li> </ol>	Pull left and right bypass handle and set them in slots in the chassis
Engine is overheating	<ol style="list-style-type: none"> <li>1. Dirt in the fuel line</li> <li>2. Dirty air filter</li> <li>3. Low engine oil</li> <li>4. Fouled spark plug</li> <li>5. Misuse of the mower</li> <li>6. Dull blades</li> <li>7. Spindle bearing failure</li> </ol>	<ol style="list-style-type: none"> <li>1. Replace fuel filter and flush tank</li> <li>2. Clean or replace the air filter</li> <li>3. Add engine oil</li> <li>4. Replace spark plug</li> <li>5. Mow slower, wait for grass to dry out</li> <li>6. Sharpen cutting blades</li> <li>7. Take in for service</li> </ol>
Grass not cut smoothly or cleanly	<ol style="list-style-type: none"> <li>1. Dull blades</li> <li>2. Mowing too fast for conditions</li> <li>3. Grass is wet or bent over</li> <li>4. Blade is bent</li> <li>5. Tire pressure not equal</li> <li>6. Deck is set at uneven heights</li> <li>7. Blades are set upside down</li> <li>8. Excessive grass and debris build up underneath the deck</li> </ol>	<ol style="list-style-type: none"> <li>1. Sharpen blades</li> <li>2. Slow down while cutting</li> <li>3. Let grass dry to stand up</li> <li>4. Replace blade</li> <li>5. Add air pressure to low tires</li> <li>6. Set deck at equal heights</li> <li>7. Take blades off and install correctly</li> <li>8. Clean out debris</li> </ol>
Mower always pulls to one side	<ol style="list-style-type: none"> <li>1. Controls out of adjustment</li> <li>2. Transmission failure</li> </ol>	<ol style="list-style-type: none"> <li>1. Adjust controls</li> <li>2. Take in for service</li> </ol>

Please indicate the part that you are

☐ Other

---

---

---

---

☐ Date of purchase 

---

Model #: 

---

☐ Serial #: 

---

---

Name

---

Address

---

Phone

---

Email

Comments:

**IMPORTANT: Please include your receipt. Without a receipt, your order will be delayed. You may also email us at:**

**E-mail:        sales@jadeequipments.com**

**Fax:            400-188-6691**

**If emailing, please scan in your proof of purchase.**



Products Covered by this Warranty	Length of Warranty: *(from the date of original retail purchase)		
	Residential	Commercial	Rental
Engine	Manufacturer's warranty	Manufacturer's warranty	Manufacturer's warranty
Transmission	Manufacturer's warranty	Manufacturer's warranty	Manufacturer's warranty
Mower frame	Lifetime (original owner only)	Lifetime (original owner only)	90 days
Belts, Tires, Battery	90 days	90 days	90 days
Attachments	1 yr limited	1 yr limited	30 day limited

\*LENGTH OF WARRANTY: Batteries supplied with applicable products as standard, original equipment are covered by this warranty for a period of 90 days from the date of original retail product purchase. Consumable parts such as oil, spark plugs, filters, and blades are not covered by this warranty.

#### To Qualify for this Warranty

The product must be purchased from a dealer authorized by Jade Outdoor Power Equipment.,Ltd to sell those products. This warranty applies to first retail purchaser/owner during the applicable warranty time period. SAVE YOUR PROOF OF PURCHASE RECEIPT. MUST HAVE PROOF OF PURCHASE TO OBTAIN WARRANTY.

#### What JADE Outdoor Power Will Repair or Replace under Warranty

JADE will repair or replace, at its option, any part that is proven to be **defective in material or workmanship** under normal use during the applicable warranty time period subject to the exclusions stated herein. This warranty is void if the owner fails to follow the prescribed maintenance and operating procedures described in this manual. This specifically refers to ensuring routine lubrications and oil changes are made, that fuel stabilizer is used when the product is stored and that the product is not overloaded.

JADE has the right to recover warranty administration costs from the owner if the root cause of the malfunction is found to be other than defective material or workmanship. In particular, this warranty does not cover: contaminants in the fuel or oil; damage caused by not following the prescribed warnings and operating practices; failure to follow proper maintenance and storage procedures; and physical damage due to misuse, shipping, handling or storage.

Warranty repairs will be made without charge for parts and labor for the first year.

Anything replaced under warranty becomes the property of JADE. Parts replaced under warranty will be considered as part of the original product and any warranty on those parts will expire coincident with the original product warranty.

#### To Obtain Warranty Service

You must take the Early Bird product, accessory, replacement part, apparel or the power equipment on which the accessory or replacement part is installed, and proof of purchase, at your expense, to any Early Bird service location in the world, who is authorized to service that product, during the service location's normal business hours. If you are unable to obtain warranty service, or are dissatisfied with the warranty service you receive, take the following steps: First, contact the manager of the service center involved; normally this will resolve the problem. However, if you should require further assistance, write or call the JADE Parts & Service, LLC 400-188-6691

#### Exclusions

This warranty does not cover: normal wear, contaminants in the fuel or oil; damage as a result of use in an application for which the product was not designed; damage caused by incorporation or use of unsuitable attachments or parts, unauthorized alteration, or other misuse and neglect; damage caused by failure to follow the prescribed warnings, operating practices, proper maintenance and storage procedures; parts affected or damaged by accident and/or collision; damage due to shipping, handling, storage or any causes other than defects in material or workmanship of the product.

#### Disclaimer of Consequential Damage and Limitation of Implied Warranties

JADE disclaims any responsibility for loss of time or use of the product, transportation, commercial loss, or any other incidental or consequential damage. Any implied warranties are limited to the duration of this written limited warranty.

THIS WARRANTY IS VOID IF THE MANUFACTURING DATE AND THE SERIAL NUMBER ON THE EQUIPMENT HAS BEEN REMOVED OR THE EQUIPMENT HAS BEEN MODIFIED.